



Doctor of Nursing Practice (DNP) Program
Student Handbook
2024-2025

307 Trent Drive
DUMC 3322
Durham, NC 27710
<http://www.nursing.duke.edu>

About this handbook:

This handbook is designed to be a ready resource for you during the course of your DNP studies at the Duke University School of Nursing, and as such is designed for currently enrolled Doctor of Nursing Practice students. Other degree programs within the School of Nursing have separate handbooks. For information about those other degree programs, please consult either the [Bulletin of the Duke University School of Nursing](#) or the [School of Nursing's website](#). Changes will be made to the electronic version of the handbook as they occur. Consult the electronic copy for the most current information.

Note :

The information contained in this handbook is for individuals who are post-Master's DNP students and for those post-BSN DNP students who are taking 900-level DNP courses. Post-BSN DNP students and those students enrolled in a Post-Graduate Certificate to DNP course of study taking 500-800 level course work should consult the MSN Student Handbook.

Contents

DEAN'S WELCOME.....	1
ASSISTANT DEAN'S WELCOME	2
ACADEMIC CALENDAR.....	3
DUKE UNIVERSITY SCHOOL OF NURSING.....	5
Mission	5
Philosophy.....	5
Human Beings.....	5
Society/Environment	5
Health	5
Health Care Delivery	5
Nursing	6
Teaching/Learning.....	6
Statement of Diversity and Inclusion.....	6
Core Values.....	7
ACADEMIC INTEGRITY	7
The Duke Community Standard	7
Academic Integrity and Professionalism Policy for DUSON Students.....	8
Civility and Professional Conduct.....	8
Dispute Resolution	8
ACADEMIC PROGRAMS	8
Doctor of Nursing Practice Program	8
Curriculum	9
Translation.....	9
Transformation	9
Leadership.....	9
Electives	9
Courses	10
Minimum Number of Credits Required for DNP Degree for Those with an Earned Master's Degree	10
Minimum Number of Credits Required for DNP Degree for Those with an Earned BSN Degree	10

DNP Projects.....	10
Overview.....	10
DNP Project Committee	10
Sites for the DNP Project	10
DNP Project Progress and Associated Academic Credit.....	11
Deliverables.....	11
Publication of DNP Project Outcomes	11
Authorship	11
After Your Article Is Submitted	12
DNP Outcome Objectives	12
Student Admission Pathways.....	13
Post BSN Degree (minimum of 71-84 credits).....	13
Currently Enrolled MSN Students at DUSON (minimum of 35 credits beyond the Master’s degree)	13
Post Master’s Degree (minimum of 35 credits).....	13
Post / Concurrent PhD (minimum of 35 credits)	13
ACADEMIC POLICIES AND PROCEDURES.....	14
Overview.....	14
Organization of this Section	14
Confidentiality and Release of Student Records	14
STUDENT PROGRESSION WITH COURSE OF STUDY	14
Academic Advisement.....	14
Academic Warning and Academic Probation.....	14
Definition of Full-Time Enrollment Status.....	15
Attendance	15
Religious Observance and Holidays	15
Procedure.....	15
Course Format Definitions.....	15
Grades.....	16
Incomplete Course Work (“I” Grade).....	16
Adding, Dropping, or Withdrawing from a Course	16

Transfer of Credits.....	17
Interinstitutional Agreements.....	17
Time for Completion of a Degree	18
Separation from the School of Nursing	18
Leave of Absence.....	18
Student Parental Leave.....	18
Returning from a Leave of Absence.....	18
Withdrawal from the School of Nursing.....	19
Student Request for Voluntary Withdrawal from the School of Nursing	19
Involuntary Withdrawal from the School of Nursing	19
Administrative Withdrawal for Reasons of Conduct.....	19
Administrative Withdrawal for Academic Performance	20
Degree Completion and Graduation	20
Intent to Graduate	20
Technical Standards for Degree Completion	20
Graduate Recognition and Commencement.....	20
School of Nursing Hooding and Recognition Ceremonies.....	20
Duke University Commencement Exercises.....	21
Diplomas.....	21
NON-ACADEMIC POLICIES AND PROCEDURES	21
Duke University – Tobacco Free Campus Policy.....	21
Alcohol / Drug Policy	21
Reasonable Accommodation Process	22
Duke University Office for Institutional Equity	22
Duke University Non-Discrimination Statement	22
Communication between Duke University and Students.....	22
Use of Social Media	23
Overview.....	23
Social Media Defined:	23
Consequences:	24

Creating Social Media Pages and Sites:.....	24
DUSON Student Flu Policy	24
Policy:.....	25
Procedure:.....	25
RESOURCES (DUKE UNIVERSITY)	25
Duke Student Health Services	25
Student Mental Health Services.....	26
Blue Devils Care.....	26
DukeReach.....	26
Safety	26
Duke University Police	26
Get Assistance	26
Duke University Student Affairs	27
Graduates and Professional Student Council (GPSC)	27
The Libraries	28
The Duke University Medical Center Library (DUMCL)	28
DUSON GENERAL INFORMATION.....	28
Student Identification Badges / Cards.....	29
Parking	29
ePrint	29
Name and Address Changes	29
Technology Support.....	29
DUSON RESOURCES TO SUPPORT STUDENTS	29
DUSON STUDENT ORGANIZATIONS	29
Appendix A Student Complaint and Dispute Resolution Process For Academic Issues.....	31
Appendix B Academic Integrity and Professionalism Policy for DUSON Community	34
Appendix C Process for Dispute Resolution Related to the Duke Community Standard or DUSON Academic Integrity and Professionalism Policy	38
Appendix A and C Flowcharts.....	41

DEAN'S WELCOME

Welcome to Duke University School of Nursing (DUSON), a top nursing school in the nation and the world. We are proud of the work our community is doing to transform health care, and we are honored and delighted that you are joining us!

Our mission at DUSON is to advance health equity and social justice by preparing nurse leaders and innovators with a commitment to improving health outcomes through transformative excellence in education, clinical practice, and nursing science.

Nurses—the country's largest, expertly-skilled, and most trusted segment of frontline health care providers—are uniquely poised to affect change. Throughout your course of study, you will learn more about how DUSON is leading the way in transforming models of health care, and driving meaningful and impactful change in our health care and public health systems.

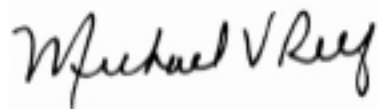
As a DUSON student, you will have the opportunity to work with and learn from faculty who are preparing the next generation of nurses to bring clinical, scientific, and relational expertise to health care, and are preparing community health and policy leaders committed to reducing health inequities. You are also joining a diverse and inclusive community dedicated to fostering a sense of belonging in every aspect of our work.

Our [School's leaders and I](#) are committed to your success and well-being, so as you embark on this new journey, we encourage you to familiarize yourself with our Student Handbook. Here you will find information on our philosophy, academic policies and procedures, clinical requirements, course information, and the many resources DUSON and Duke provide to assist you in being a successful student. I urge you to fully engage with this range of opportunities, including seminars, speakers, local and global clinical immersion experiences, community placements, student clubs, cultural and athletic events, and more.

We are here for you, and we want to ensure that you have everything you need to be a top nursing leader. If you have a concern or ideas, please contact your faculty advisor, program faculty and staff, the [Office of Student Services](#), or the [Student Success Center](#). In becoming a Duke University School of Nursing student, you now join a large, collaborative community including more than 9,000 [alumni](#). Keep up with all our community is with [News](#) and [Events](#), and follow our [Facebook](#), [Twitter](#), [Instagram](#), [LinkedIn](#), and [YouTube](#) channels.

Now is the time for change! *Now* is the time to transform nursing. I'm looking forward to you joining us as we boldly claim the mantle to advance new thinking and new actions to end health and social inequities. On behalf of the DUSON administration, faculty and staff, welcome to Duke!

Sincerely,



Michael V. Relf, PhD, RN, AACRN, ANEF, CNE, FAAN
Mary T. Champagne Distinguished Professor of Nursing
Interim Dean
Duke University School of Nursing

Associate Chief Nurse Executive for
Academic Partnerships and Innovation

ASSISTANT DEAN'S WELCOME

Let me add my welcome to that of the dean. We are delighted you made the decision to attend Duke to earn your Doctor of Nursing practice degree. The admission process was a rigorous one, but you rose to the top and are now ready to embark on a new educational journey. Whether you are just beginning your journey in advanced nursing practice as a BSN-DNP student or come to us as an expert nurse in your area of practice as an MSN-DNP student, our focus is to provide you with knowledge and skills you need to enhance your chosen role. We believe that what you learn in the program will have a transformative effect on your professional practice. The hallmark of your DNP program is Translation, Transformation and Leadership. That is translation of evidence to practice, transformation of health care systems and delivery methods, and leadership within and across health care professions and organizations.

I look forward to this academic year and to working with you as you begin this new journey!

Mary Lou Affronti DNP, RN, ANP, MHSc, FAAN
Professor and Assistant Dean, DNP Program

ACADEMIC CALENDAR

For the 2024-2025 Academic Year, the School of Nursing has four Academic Calendars: one for the [ABSN Program](#); one for [MSN and DNP](#), excluding Nurse Anesthesia, students; one for [Nurse Anesthesia DNP](#) students and one for [PhD students](#). Consult the appropriate Academic Calendar for information regarding the academic year (i.e., semester beginning and ending dates, registration windows, holidays, etc.) The Graduate School Academic Calendar is available [here](#).

Offices

Dean's Office

Michael V. Relf
Interim Dean of the School of Nursing;
(919) 684-9444
michael.relf@duke.edu

Office of Global and Community Health Initiatives

Eleanor L. Stevenson
Interim Vice Dean for Global and Community
Health Affairs
(919) 660-3003
eleanor.stevenson@duke.edu

Office of Research Affairs

Sharron Docherty
Vice Dean Research
(919) 668-3836
sharron.docherty@duke.edu

Office of Admissions

Brandon Holmes
Director of Admissions and Recruiting
(919) 668-6274
bgh7@duke.edu

Office of Academic Affairs

Anne L. Derouin
Vice Dean for Academic and Student Affairs
(919) 668-5375
anne.derouin@duke.edu

Office of Diversity, Equity & Inclusion

Ernest Grant
Vice Dean for Diversity, Equity, Inclusion and
Belonging
(919) 668-5103
ernest.grant@duke.edu

Office of Financial Aid

Jill C. Cordell
Senior Director, Financial Aid and Institutional
Research
(919) 684-9351
jill.cordell@duke.edu

Office of Student Services

Bebe T. Mills
Director of Student Services and Registrar
(919) 684-9151
bebe.mills@duke.edu

ACADEMIC PROGRAMS

Accelerated Bachelor of Science in Nursing

Stephanie Gedzyk-Nieman, Assistant Dean
(919) 684-9364
stephanie.gedzyk-nieman@duke.edu

Doctor of Philosophy in Nursing

Rosa Gonzalez-Guarda, Assistant Dean
(919) 613-2634
rosa.gonzalez-guarda@duke.edu

DNP-Nurse Anesthesia Program

Jessica Szydowski, Assistant Dean
(919) 613-9767
jessica.szydowski@duke.edu

Master of Science in Nursing

Benjamin Smallheer, Assistant Dean
Phone: (919) 613 9787
benjamin.smallheer@duke.edu

Doctor of Nursing Practice

Mary Lou Affronti, Assistant Dean
(919) 684-9365
affron002@duke.edu

DUKE UNIVERSITY SCHOOL OF NURSING

Mission

We, at the Duke University School of Nursing, advance health equity and social justice by preparing nurse leaders and innovators with a commitment to improving health outcomes through transformative excellence in education, clinical practice, and nursing science.

Philosophy

Duke University School of Nursing is committed to achieving distinction in research, education and patient care predicated on our beliefs regarding human beings, society and the environment, health and health care delivery, nursing, and teaching and learning.

Human Beings

We believe that the dignity of each human being is to be respected and nurtured, and embracing our diversity affirms, respects, and celebrates the uniqueness of each person. We believe that each human being is a unique expression of attributes, behaviors and values which are influenced by his or her environment, social norms, cultural values, physical characteristics, experiences, religious beliefs and practices. We also believe that human beings exist in relation to one another, including families, communities, and populations.

Society/Environment

As socio-cultural beings, humans are affected by and, in turn, influence the environments in which they exist, environments that are both internal (i.e., physiological, psychological, ethical) and external (i.e., cultural, political, social, economic, professional, global). Such environments influence the health of individuals and groups, and also influence health care delivery systems, access to care, and health disparities. We believe that society has a responsibility for providing environments that are conducive to maximizing the potential of its individual members and of society as a whole, for eliminating long-term inequities that contribute to health disparities, and for creating systems and roles that protect its members.

Health

We believe that optimal health does not preclude the existence of illness; health and illness exist on parallel continuums such that even people with chronic or debilitating illness may experience optimal levels of health through adaptation. We believe that all humans, from infants to the oldest of age, have a capacity to adapt to health and illness challenges whether they arise from environmental or genetic origins. Nursing's role is to assess, support adaptation, or intervene when the appropriate ability does not exist within the individual or group. Because health is an innate characteristic of humans, we believe that high quality health care is a human right.

Health Care Delivery

Maintaining optimal health and preventing disease for individuals, families, communities and populations depend on collaborative partnerships between patients/families/communities and teams of interprofessional providers of care. We believe that health care must be patient-centered and that mutual trust between patients and providers is created by relationships that reflect respect for dignity, diversity, integrity, self-determination, empathy, and a capacity for grace and empowerment. Patients/Families/Communities must be supported and encouraged in making care decisions and in engaging in the adaptive work needed for responding to health or illness challenges as they transition

through all levels of the care system.

Nursing

Nursing exists as a function of society for the protection of its members through legally sanctioned roles, responsibilities, and scopes of practice. We believe that nursing is a scholarly discipline centered on assisting people to protect, promote, and optimize their health and abilities, prevent illness and injury, and alleviate suffering. Nursing achieves this through the diagnosis and treatment of human responses to health threatening conditions, advocacy in the care of individuals and groups, and the generation and translation of research findings for nursing practice. Nursing is committed to a holistic and evidence-based approach to human caring and compassion; respecting the dignity, self-determination, and worth of all human beings. It is our belief that Nursing focuses on the uniqueness of each human being, guided by the systematic process of assessment, planning, implementation, and evaluation; the goal of which is to optimize the quality of adaptation in human beings.

We believe that nursing has a moral responsibility to the common good and an obligation to social justice and equitable access to culturally sensitive, high-quality care for all human beings. Nurses also are responsible for helping to reduce health disparities and reaching out to those, locally or abroad, who are vulnerable.

We believe that nurses begin as novices and progress to experts, with increasing complexities of knowledge, skills and values needed to promote, maintain, restore, support, and maximize adaptation of humans as they fluctuate along the wellness and illness continuums. We affirm our commitment to scientific inquiry, the advancement of knowledge and understanding, and the transfer of that knowledge to others for the good of society through innovation and the novel application of technology. We believe that all nurses must practice to the full scope of their education and training in environments where laws, standards of practice, and reimbursement regulations are commensurate with education and experience.

Teaching/Learning

We believe that our purpose is to develop nurse leaders in practice, education, administration and research by focusing on students' intellectual growth and development as adults committed to high ethical standards and full participation in their communities. We recognize that it is the responsibility of all individuals to assume ownership of and responsibility for ongoing learning, as well as to continually refine the skills that facilitate critical inquiry for lifelong learning.

The Duke University School of Nursing promotes an intellectual environment that is built on a commitment to free and open inquiry and is a center of excellence for the promotion of scholarship and advancement of nursing science, practice and education. We affirm that it is the responsibility of faculty to create and nurture academic initiatives that strengthen our engagement of real world issues by anticipating new models of knowledge formation and applying knowledge to societal issues. This, we believe, equips students with the necessary cognitive skills, clinical reasoning, clinical imagination, professional identity and commitment to the values of the profession, that are necessary to function as effective and ethical nurse leaders in situations that are underdetermined, contingent, and changing over time.

Statement of Diversity and Inclusion

Duke University School of Nursing is committed to increasing diversity and inclusiveness in our community. Diversity is more than broadly representative demographic differences. Rather, diversity

embodies cultural sensitivity and openness, collaboration, and inclusion. Diversity fosters learning by reflecting experiences from life, classroom, and practice, as well as social beliefs. Individually and together, we encourage opportunities to think and behave equitably by acknowledging and respecting different beliefs, practices, and cultural norms. We honor pluralism and encourage each other to explore, engage in, and embrace one's uniqueness while we uphold academic excellence, celebrate strategic change, and honor traditions. By embracing diversity and inclusion in all that we do and strive for, we strengthen our community, our pedagogy, our research, and the future design, development, and delivery of a health care system that eliminates disparities both locally and globally. Moving forward, we will continue to acknowledge and celebrate our differences and promote community values that reflect our diversity and multiple ways of knowing in an intercultural world.

Core Values

Excellence

We are entrusted to provide the highest quality education for our students and lead in the discovery of advances that improve the health of others.

Integrity

We are committed to honesty, transparency, and accountability for our actions and outcomes.

Collaboration

Through collaboration and teamwork, we multiply the impact of our work for the greatest possible benefit.

Respect

We treat others with civility, kindness and as equals in all interactions, and recognize that all members of our community offer valuable contributions.

Innovation

We thrive on bold creativity and ingenuity, finding solutions that define the future.

Diversity and Inclusiveness

Celebrate our diversity, eliminate barriers that prevent full participation of all, and strive for institutional equity.

ACADEMIC INTEGRITY

The Duke Community Standard

Duke University is a community dedicated to scholarship, leadership, and service and to the principles of honesty, fairness, respect and accountability. Citizens of this community commit to reflect upon and uphold these principles in all academic and non-academic endeavors, and to protect and promote a culture of integrity.

To uphold the Duke Community Standard:

- I will not lie, cheat, or steal in my academic endeavors;
- I will conduct myself honorably in all my endeavors; and
- I will act if the Standard is compromised.

Academic Integrity and Professionalism Policy for DUSON Students

In all educational, clinical, and professional situations, Duke University School of Nursing students are expected to conduct themselves in accordance with these principles:

- **Academic integrity,**
- **Professional integrity,** and
- **Respect for others**

as set forth in the Duke University School of Nursing Academic Integrity and Professionalism Policy. See the appendices to this handbook for the full text of the Academic Integrity and Professionalism Policy as well as the processes for dispute resolution for academic issues and for disputes related to *related to the Duke Community Standard or the School of Nursing Academic Integrity and Professionalism Policy.*

Civility and Professional Conduct

In an effort to articulate and cultivate habits for being a member of the DUSON community, the DNP program has adopted the following statement and community norms to help guide its community members in their interactions.

The Duke University School of Nursing community is dedicated to creating and maintaining a civil community of success that supports respectful discourse, openness to opposing points of view, and passionate dialogue with an intention to secure common ground.

To achieve civility within the community and facilitate a culture of success, it essential for its members to uphold the following community norms:

- Assume goodwill – approaching situations positively;
- Communicate respectfully – listening actively and being timely; and
- Send the mail to the right address – taking the problem to the person involved and not going around or behind the involved person or up the chain of command without first attempting resolution with the involved person.
- We are all responsible for creating a civil and inclusive learning environment.

Dispute Resolution

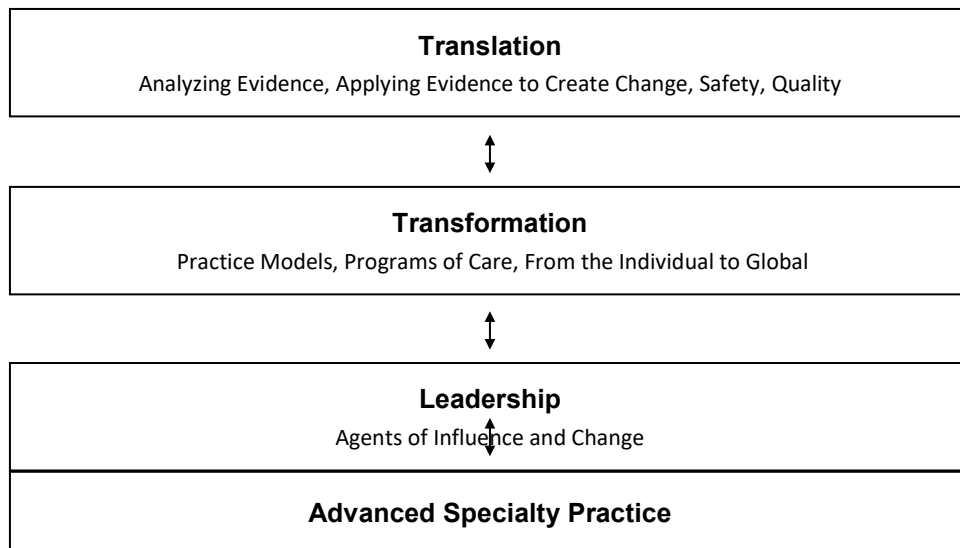
In recognition of the fact that disputes or concerns will arise, DUSON has developed a process to address these issues. This process is built on a basic guideline of the DUSON community that any dispute should be resolved at the lowest level possible. Your course instructors, faculty advisor and Assistant Dean are resources available to you.

Another resource to assist with dispute resolution is the Ombudsperson services available through the Office of Institutional Equity. The full dispute resolution process is in the appendix of this handbook.

ACADEMIC PROGRAMS

Doctor of Nursing Practice Program

The DNP curriculum is based on the Essentials of the Doctor of Nursing Practice issued by the American Association of Colleges of Nursing and is in accord with the guidelines issued by nursing specialty practice organizations. The curriculum has four main foci: translation, transformation, leadership, and specialty practice. The DNP curriculum foci (excluding 6 credits of electives) are shown in the figure below. The common thread throughout the curriculum is data-driven, evidence-based work that leads to quality care and patient safety.



Curriculum

The DNP program is a rigorous course of study in which information in each course builds upon knowledge from previous coursework. It is therefore expected that students will progress through the program using the published matriculation plan. Deviations from this plan will result in a significant delay in program completion.

Translation

Content in this area prepares students to evaluate research to determine the credibility of the evidence presented; use research findings to inform practice, improve patient safety and initiate process improvements; and use existing and developing databases to guide decisions for groups of patients or health systems.

Transformation

Content in this area prepares students to move individuals and organizations from current reality to a new, desired state using collective group processes. This content includes innovation, planned and managed change, visionary leadership and strategic (program) planning, policy, inter-professional teamwork, community involvement, new practice models, quality (and outcome) metrics and measures, interoperable user-centric information systems, data driven decision-making and informed, involved, and health literate consumers.

Leadership

This content area prepares students to assume leadership positions in a specialty area through attainment and use of knowledge and skills in work across disciplines, negotiation, professional values, leadership concepts, professional and business ethics, and innovation in health care settings.

Electives

The number of electives is a minimum of 6 credit hours. Students may pursue electives to add breadth and depth to their content area, or they may elect to pursue courses to support an education,

management, or health policy focus. Students who completed their MSN at DUSON (with the exception of an MSN in Nursed Health Leadership and Nursing Informatics) within the past five years have already completed 6 credit hours that may be applied to the electives in the DNP degree.

Courses

The required DNP courses are distance-based with on campus sessions in specific semesters. Due to the highly collaborative and interactive group work that takes place during these on campus sessions, participation in the on-campus sessions is expected. Students unable to attend an on-campus session or who are not able to participate in the group work/learning conducted during the session may have points deducted from their grade at the discretion of the course faculty.

Minimum Number of Credits Required for DNP Degree for Those with an Earned Master's Degree

The minimum number of credits required for the DNP degree is 35.

Minimum Number of Credits Required for DNP Degree for Those with an Earned BSN Degree

The minimum number of credits required for the DNP degree is 71.

DNP Projects

Overview

The DNP Project course is the integrating course that brings together the practice and scholarship elements of the Doctor of Nursing Practice degree. The DNP Project is a 4-5 semester scholarly project designed to address a practice issue affecting groups of patients, health care organizations, health care systems or professional organizations. Students work with clinics, inpatient units, hospitals, health care systems, or professional organizations to assess, plan, implement, and evaluate an initiative jointly agreed upon by the setting, the student, and the student's Advisory Committee. For example, students can partner with faculty in the Duke Center for Community Research (DCCR) to identify and implement projects that benefit the Durham community.

DNP Project Committee

The DNP Project is directed by a Project Committee; chaired by a doctorally prepared regular rank member of the Duke University School of Nursing faculty. The committee members are nominated by the student and selected by the chairperson based on the qualifications and expertise of the committee members. The committee is composed of a chairperson and two others, one of whom must be doctorally prepared (in any discipline). Whenever possible, the three members of the committee should possess complementary areas of expertise to guide the content and methods of the project.

Sites for the DNP Project

Students may propose to use their current site of employment or another site for the DNP project. Once a potential site is identified and approved by the student's advisory committee, the student will have the clinical site sign a letter of agreement. Thus, students in the first semester of the program are encouraged to identify and propose a potential site.

DNP Project Progress and Associated Academic Credit

The DNP project is a minimum of 4 (5 if the student matriculated prior to Fall 2020) credits over 4 semesters. The project requires a minimum of 400 hours; typically, students spend over 500 hours on their project. The student is required to keep track of the project hours in the Typhon platform (or on a Scholarly Project Hours Tracking Form located in DNP Commons for students who matriculated prior to Spring 2022) and submit to the DNP program administrator prior to graduation.

Suggested milestones for the scholarly project and associated credits are noted below:

Semester 1: determine project site and needs

Semester 2: 1 credit – select and secure committee members, draft project summary

Semester 3: 1 credits – project summary approval, defend proposal, submit to IRB (if needed)

Semester 4: 1 credit – implement project

Semester 5: 1 credit – evaluate project, write manuscript, defend project, submit manuscript for publication.

Students who have not completed the project in its entirety and have registered for all 4 project credits are required to register for a minimum of 1 additional scholarly project credit for each succeeding semester until the scholarly project is completed.

Deliverables

At the completion of the project, the student will present the findings via an oral presentation (in a public forum). A minimum of one manuscript will be prepared and submitted to a professional journal.

Publication of DNP Project Outcomes

In compliance with DNP graduation requirements, DNP students must submit a committee- approved manuscript to a professional journal. Authorship of the article is as follows:

- the DNP student is the first author, and
- The DNP Scholarly Project Chair will help the student determine listing of authors. The following guidelines of the International Committee of Medical Journal Editors (ICMJE)¹ apply:

Authorship

According to the ICMJE¹ guidelines, “Authorship credit should be based on

- 1) substantial contributions to the conception or design of the work, or acquisition, analysis or interpretation of data for the work; and
- 2) drafting the work or revising it critically for important intellectual content; and
- 3) final approval of the version to be published and
- 4) agreement to be accountable for all aspects of the work in ensuring that questions related to the accuracy or integrity of any part of the work are appropriately investigated and resolved.

Each person listed as an author should meet all four criteria, and all persons who qualify should be listed as authors. The corresponding author should be prepared to explain the inclusion of all coauthors and their order in the byline. (Some journals require the submission of specific information about the

¹ [Uniform requirements for manuscripts submitted to biomedical journals: Writing and editing for biomedical publications.](#)

contributions of each author and include this information in the published article.) The order of authors should be a joint decision.

After Your Article Is Submitted

The journal review process for articles is time-consuming; you need to exhibit patience while your submission is in review. Most journals use online submission systems that allow authors to track the progress of their manuscripts through this process, which typically takes several months. If there is no electronic process, and you have not heard from the journal after several months, you may contact the editor.

If the manuscript is accepted by the journal with or without revisions, the student should consult the DNP Project Chair to discuss the editor's response, and if revisions are recommended, changes must be made prior to resubmission of the article. This needs to be done in a timely fashion.

If a manuscript is rejected by the journal to which it was initially submitted, the student should consult with the DNP Project Chair to identify other journals for article submission. The article should then be revised as needed and submitted to the next journal that is selected as most relevant, and if this is not successful to a third or even a fourth journal. Although we hope that your first journal submission is successful, it is not unusual for an article rejected by one journal to be accepted after subsequent submission to another journal.

If the article submitted to the first journal or subsequent journals is not accepted, and the student declines to re-submit to another journal within three months, the right to the manuscript will be transferred to the DNP Project Chair, who will be the first author on the article if it is resubmitted and accepted for publication. The student will become the second author and, in this capacity, will be notified whenever the manuscript is submitted to a new journal.

Faculty believe that dissemination of results is an integral part of scholarly work. We encourage you to work with your DNP Project Chair to publish .

Finally, in addition to publishing your DNP project, we encourage you to submit abstracts for oral presentations and poster presentations at professional meetings. Consult your DNP Project Chair for guidance on submitting your work and preparing presentations.

DNP Outcome Objectives

The outcome objectives of the DNP program reflect integration and application of the knowledge and skills obtained in the program. Thus, at the completion of the program the DNP graduate will be able to:

- Use translational science and analytic methods to develop, identify, implement and evaluate best practices to improve health care and health care systems.
- Act as a practice scholar to design, direct and evaluate system changes to promote safe, timely, effective, efficient, equitable and patient-centered care.
- Engage in complex, evidence-based advanced-nursing practice and evaluate innovative approaches to care delivery for individuals, communities and populations.
- Partner with others to develop interactive interprofessional teams that communicate effectively, promote health, reduce risk, enhance patient outcomes and improve complex health care delivery systems.

- Employ strategic leadership skills to influence health policy; implement ethical, cost effective and evidence-based changes in care systems; and advance the profession.
- Translate knowledge into practice and policy to reduce health disparities, encourage cultural sensitivity and promote access to quality care while advocating for social justice and equity locally, nationally and globally.
- Use data analytic methods, information systems and technology to evaluate, integrate and apply knowledge that will improve programs of care, outcomes of care and care systems.

Student Admission Pathways

Students will enter the DNP Program through one of four pathways:

Post BSN Degree (minimum of 71-84 credits)

Nurses with an earned BSN who are registered nurses will be eligible to enter the DNP program directly after completion of the BSN. At the time of application to the DNP program, they will be required to declare their advanced practice major, since at DUSON some majors are more competitive than others based on available student slots in the specialty. Additionally, some majors have required clinical experiences prior to matriculation. The student will begin the program completing their MSN requirements.

Currently Enrolled MSN Students at DUSON (minimum of 35 credits beyond the Master's degree)

Students currently enrolled in one of the Master's advanced practice majors can apply for entry to the DNP program.

Post Master's Degree (minimum of 35 credits)

Students with an earned Master's in nursing will be eligible to apply for the DNP if their Master's degree is in an advanced practice major or in a health-related field. Advanced practice is defined as direct care specialization (e.g., nurse practitioner, clinical nurse specialist, nurse anesthetist, nurse midwife) or indirect care specialization (e.g., nursing administration, nursing and healthcare leadership, nursing informatics). The curriculum for these students will recognize their attainment of the advanced specialty practice Master's degree. Depending on their advanced practice major, students may or may not have prerequisites to meet prior to or concurrent with admission to the program. Note: Direct Master entry (DME) or MPEN, Clinical Nurse Leader (CNL) majors and General Master's degrees are not eligible for Post Master's Degree. DNP Students who completed their MSN at DUSON (with the exception of an MSN in Nursing and Healthcare Leadership or Informatics) within the past 5 years are not required to take 6 credit hours of electives in the DNP degree.

Post / Concurrent PhD (minimum of 35 credits)

A very small number of students may desire to have terminal degrees in both practice and research (DNP/PhD). For these students, an earned Master's degree in an advanced practice major will be required prior to admission. Depending on their advanced practice majors, students may or may not have prerequisites to meet prior to or concurrent with admission to the program.

ACADEMIC POLICIES AND PROCEDURES

Overview

The students, faculty, administration, and staff of the Duke University School of Nursing are part of the academic community of Duke University and, as such, are subject to the policies, rules and regulations of the University as a whole. Additionally, the School and its respective programs may, as deemed necessary, develop its own policies and procedures to augment those of the University as contained in but not limited to the 2024-2025 Bulletin of the Duke University School of Nursing and this handbook. Additional information can be obtained by consulting the ABSN Program Office or the [School of Nursing website](#).

Organization of this Section

Each academic program of the Duke University School of Nursing has developed its own Student Handbook. Information relevant to all programs is included in all handbooks, supplemented by program-specific information. Wherever possible, students are referred also to electronic references via the use of hyperlinks.

Confidentiality and Release of Student Records

A full explanation of the Duke [Student Records Policy](#) is available on the Office of the University Registrar website.

STUDENT PROGRESSION WITH COURSE OF STUDY

Academic Advisement

Every student is assigned an academic advisor at the time of matriculation. The initial advisor for all students will be the DNP Program Assistant Dean. The advisor will guide the student's academic activities and course of study, in accordance with the student's clinical, professional, and scholarly interest. The student, in collaboration with the student's academic advisor, will develop a matriculation plan (long range plan) that charts progression from matriculation to graduation. Some courses must be taken in a specific sequence so it is critical to recognize pre-requisites in developing the matriculation plan. When a student wishes to change or deviate from an accepted matriculation plan, the student must promptly communicate with the academic advisor to plan and document when and how the student will return to the matriculation plan or develop a new revised matriculation plan.

The School of Nursing reserves the right to change a student's advisor as needed. Likewise, the student may request a change of advisor by submitting the [Change of Advisor Form](#).

Academic Warning and Academic Probation

A student whose cumulative GPA falls between 2.7 and 3.0 at any time will receive a letter of academic warning and will be encouraged to meet with her or his academic advisor. Students whose cumulative GPA falls below 2.7, or who have a "C" in a required DNP course 900-level nursing course, will be placed on academic probation and must meet with their academic advisor to develop a personal plan for improvement.

Definition of Full-Time Enrollment Status

- Full-time status is defined as follows:
- Full credit load for fall and spring semesters: 6 credit hours/semester
- Full credit load for summer semester: 4 credit hours
- Full credit load for international students: 6 credit hours for fall/spring semesters and 4 credit hours for summer semester; no more than 3 credit hours per semester may be taken in online format.

Attendance

Students are expected to attend and participate in all classes, clinical rotations and on campus intensive sessions unless excused by the course faculty prior to being absent.

Religious Observance and Holidays

The Duke University School of Nursing has established procedures for students to notify their instructors of an absence in order to observe a religious holiday. These procedures reflect the School's commitment to our increasing diversity and to enabling students' spiritual development. Students desiring to miss classroom or clinical sessions to observe a religious holiday are expected to make prior arrangements with their instructor(s) to make up any work missed. As a courtesy and in order to allow ample planning time for making up work, students should notify each of their instructors at the beginning of the semester of any religious holiday(s) that will necessitate their absence from classes that semester.

Procedure

The religious observance notification procedure is based on the operating principle that students will act in accordance with the Duke Community Standard. This procedure can be used only to notify an instructor of an absence necessitated by observance of a religious holiday.

No later than four weeks prior to the date of the holiday, students are expected to notify their instructor(s) that they will miss classroom or clinical sessions in order to observe a religious holiday by completing and submitting to the instructor the [Notification of Absence Due to Observance of a Religious Holiday](#) form.

Because religious holidays are scheduled in advance, instructors have the right to insist that course work to be missed should be completed prior to an anticipated absence in accordance with the course attendance policy. The student's signature on the form affirms compliance with the Duke Community Standard.

Given the time limitations inherent in completing end-of-semester assignments or making up a missed final exam, this procedure cannot be used during the final exam period. Students are expected to take final examinations at the scheduled times and to complete end-of-semester work by the deadlines set by the instructor.

Course Format Definitions

The School of Nursing offers courses in three delivery formats: campus courses, hybrid courses, and online courses. Course formats are defined as follows:

- **Campus Courses.** Campus courses meet as regularly scheduled class sessions throughout the semester.
- **Hybrid Courses.** Hybrid courses combine online learning with on-campus face-to-face sessions.

This does not mean synchronous courses for which some students are on campus and others join remotely.

- **Online Courses.** Online courses consist of instructor-designed, student driven, interactive modules of instruction delivered via a learning platform that is virtually available on the Internet. Online courses may have a synchronous component (planned activities at specific times when students and/or faculty interact – for example, in an online chat or through a teleconference -- or may be fully asynchronous.

Grades

Most courses in the School of Nursing counting towards the DNP degree must be taken for a grade.

Grades will be assigned as follows:

Letter Grade	Final Course Percentage	GPA Calculation
A	93 – 100	4.0
A –	90 – 92	3.7
B +	87 – 89	3.3
B	83 – 86	3.0
B –	80 – 82	2.7
C +	77 – 79	2.3
C	73 – 76	2.0
C –	70 – 72	1.7
F	69 and below	0.0

Certain courses have a designation of “credit.” These courses include, but are not limited to, directed scholarship, independent study, MSN clinical and synthesis courses, and the DNP Project. These courses are graded “Cr” or “NCr.” The designation “Cr” indicates that the student has successfully completed all the requirements for those credits registered. The designation “NCr” indicates that the student has failed the course and “NCr” is the equivalent of an F grade.

Incomplete Course Work (“I” Grade)

In case of illness or other situations where coursework cannot be completed on schedule, it is the student’s responsibility to negotiate with the instructor for an “I”, (incomplete grade) and adjustment of the deadline for completion of work. All coursework must be submitted on or before the adjusted due date. At most, students have one calendar year from the date the course ended to remove the “I”, and if it is not removed in one calendar year, the grade will be converted to an “F”. Students may not graduate with any incomplete on their transcript.

Adding, Dropping, or Withdrawing from a Course

Using DukeHub (Duke’s online student registration system), students are able to drop a course or add a course during the designated Drop/Add period at the beginning of each semester.

The decision to withdraw from a course after the scheduled Drop/Add period requires the student to meet with their faculty advisor and the faculty of the respective course(s). If the faculty advisor and faculty of the respective course(s) agree to the withdrawal, the student completes the Course Withdrawal Form and

- obtains the signature of the faculty advisor,
- obtains the signature of the faculty member teaching the course.

The faculty member teaching the course then forwards the signed form to the appropriate Assistant Dean for approval. The withdrawal will be indicated on the student's transcript as a Withdrew (W). If the withdrawal is denied, the student must complete the course and will receive the final earned grade on the official academic transcript.

When a withdrawal is approved, students should be aware that the Duke University School of Nursing cannot guarantee registration in the course the next time it is offered. Consequently, students may be delayed in completing the respective program for which they are matriculated. Students may be required to take a leave of absence from their respective program since required courses are not taught each semester. Students who find it necessary to interrupt their program of study should formally request in writing a leave of absence following the procedures outlined in the Student Handbook and utilizing the form available online through the Office of Student Services. A maximum of one calendar year's leave may be granted. Please refer to the section below on Leaves of Absence for further details.

Refunds of tuition and fees will not be made except as applicable within the established parameter of a total withdrawal from the program after the Drop/Add period. The [Course Withdrawal Form](#) may be obtained via the School of Nursing website, or in the Office of Admissions and Student Services.

Transfer of Credits

A maximum of six units (6) of graduate credit may be transferred for graduate courses completed after the earned master's degree at other accredited institutions (or in other graduate programs at Duke). Such units are transferable only if the student has received a grade of at least B (3.0 on a 4.0 scale or its equivalent) and after the student has earned a minimum of six (6) units of graduate credit at Duke University School of Nursing. The student's advisor and the program director or Assistant Dean must approve all requests for transfer credit.

Students wishing to transfer course work must make a written request to their academic advisors, and must provide a transcript and a syllabus or other description of the course they wish to have considered for transfer credit.

The [Request for Transfer of Graduate Credits](#) form is available electronically or from the Office of Admissions and Student Services.

Interinstitutional Agreements

Under a plan of cooperation between Duke University and the University of North Carolina at Chapel Hill, University of North Carolina at Greensboro, University of North Carolina at Charlotte, North Carolina Central University in Durham, and North Carolina State University in Raleigh, students properly enrolled in a graduate or professional school of Duke University during the regular academic year, and paying full fees to this institution, may be admitted to a maximum of two courses at one of the other institutions in the cooperative plan. Credit so earned is not considered transfer credit.

All interinstitutional registrations involving extra-fee courses or special fees required of all students will be made at the expense of the student and will not be considered a part of the Duke tuition coverage. [Additional information regarding interinstitutional study](#) may be found on the Duke University Registrar's website.

Time for Completion of a Degree

Post-BSN students have seven calendar years from the date of matriculation to complete the DNP degree. Post-Master's DNP students have five calendar years from the date of initial matriculation to complete the DNP degree. No full-time residence is required; however, all students enrolled in the school who have not been granted a leave of absence by the Director of the Academic Program, must register for fall, spring, and summer semesters until all degree requirements are completed. For students who find it necessary to take a leave of absence (LOA), time in LOA status counts toward the seven (post-BSN) or five (post-MSN) years for degree completion.

Separation from the School of Nursing

Students may discontinue their studies at the Duke University School of Nursing through a formal Leave of Absence or by withdrawal from the School as defined below.

Leave of Absence

All students enrolled in the School of Nursing **must register for fall, spring and summer semesters until all degree requirements are completed, unless registration is waived via an approved leave of absence.** Leaves of absence can be either student initiated or administratively initiated.

Students who find it necessary to interrupt their program of study because of medical necessity or other emergency reasons must make the request in writing to the Assistant Dean of the DNP Program using the [appropriate form](#). The request must be made **prior to the beginning** of the semester in which the leave is intended. The leave of absence may be granted for up to one year and can only be granted to students who are in good academic standing. Students who do not return or notify the school of their intent to return after a one-year approved leave of absence are automatically withdrawn from the school.

Student Parental Leave

Childbearing or adoption should not jeopardize a student's experience in the School or the completion of a program of study. A student may have up to (6) weeks of leave for the birth or adoption of a child. The student and the faculty advisor and/or the Assistant Dean of the DNP Program will determine modifications to clinical scheduling or course work deadlines to accommodate the leave period. A record of this plan will be placed in the student's educational record. Should additional time beyond six weeks be needed, the student may convert to a medical or personal leave, depending on the circumstances, as outlined in the policies described above.

Returning from a Leave of Absence

Students returning from a leave of absence should notify, in writing, their faculty advisor and the Assistant Dean of the DNP Program at least ninety days prior to the beginning of the semester in which they intend to return. The purpose of this contact is to make sure that registration and re-entry into courses will proceed smoothly.

Return from a leave of absence for medical or psychological reasons requires written notification from a physician / health care provider / therapist to the Assistant Dean of the DNP Program stating that the student is cleared to resume the course of study including participation in clinical activities. This notification must be made at least ninety days prior to the beginning of the semester in which the student plans to return.

Withdrawal from the School of Nursing

Withdrawal from the School of Nursing may be either voluntary or involuntary.

Student Request for Voluntary Withdrawal from the School of Nursing

If a student for any reason wishes to withdraw from the school, written notification must be made to the Office of Admissions and Student Services before the expected date of withdrawal and no later than the last day of classes for that semester. Forms for students [requesting withdrawal from the School](#) are available online through the School of Nursing website or from the Office of Admissions and Student Services.

Information regarding refunds of tuition and fees may be found in the section on Tuition and Fees in the School of Nursing Bulletin. Students who have been granted a withdrawal from the school and wish to return must apply for re-admission according to regular admission policies.

Involuntary Withdrawal from the School of Nursing

Involuntary withdrawal (dismissal) from the School of Nursing can occur due to reasons of personal misconduct, professional misconduct, and/or poor academic performance. Prior to any dismissal, the School of Nursing will follow due process procedures to investigate the issue and determine the course of action. The details regarding jurisdiction of dismissal and due process are covered as an appendix to this document.

Administrative Withdrawal for Reasons of Conduct

School of Nursing students who exhibit harmful, potentially harmful, or disruptive behavior due to apparent medical or psychological distress and who do not voluntarily request a leave of absence, may be subject to involuntary administrative withdrawal from the School of Nursing if their behavior renders them unable to effectively function in the University community. Such behavior includes, but is not limited to, that which:

- poses a significant threat of danger and/or harm to members of the University community; and/or
- interferes with the lawful activities or basic rights of other students, University employees, or visitors; and/or
- poses a threat or suspicion of threat to patient safety.

The School of Nursing will also address all reports of impaired or possibly impaired performance of students in order to assure the safety of patients, coworkers, and other students. In the presence of reasonable suspicion, students may be required to undergo drug testing or other professional evaluations. Health difficulties impairing performance can result from physical and/or mental/behavioral problems, including but not limited to issues such as illegal drug use, misuse of legal drugs, or alcohol abuse. Investigations, assessments and evaluations shall be confidential under the Family Educational Rights and Privacy Act (also known as FERPA or the Buckley Amendment) except as limited by regulation, ethical obligation, and/or threat to patient safety.

Additional behaviors warranting potential involuntary administrative withdrawal include, but are not limited to unethical behaviors, personal misconduct, or professional misconduct such as violating the Duke Community Standard, the School of Nursing's Academic Integrity and Professionalism Policy,

professional standards of care, the Code of Ethics for Nurses, and regulations governing nursing practice through the individual state/ district Nurse Practice Acts.

Administrative Withdrawal for Academic Performance

Students are encouraged to reflect critically on their academic performance each semester and to maintain a satisfactory grade point average (GPA).

DNP students who have completed at least three (3) courses and have a cumulative GPA less than 2.5, two C grades or an F or NCr in any DNP course will be withdrawn from the School of Nursing. A DNP student whose cumulative GPA falls between 2.7 and 3.0 at any time will receive a letter of academic warning and will be encouraged to meet with her or his academic advisor. A student whose cumulative GPA falls below 2.7, or who has a “C” in a DNP-required course, will be placed on academic probation and must meet with her or his academic advisor to develop a personal plan for improvement.

Nurse Anesthesia students who have a GPA less than 3.0 at any time during the program will be administratively withdrawn. A grade of B- (80.0-82.9) in any graduate level course will result in administrative withdrawal from the Nurse Anesthesia Program at the end of the semester in which the grade is received. Students are required to successfully complete all credit/no credit courses, and failure to do so will result in administrative withdrawal from the program.

Degree Completion and Graduation

Intent to Graduate

All students eligible to graduate will be notified by email that they must file an online application to graduate through DukeHub. The notification email includes instructions on how to access DukeHub and complete the application form electronically.

Students expecting to graduate must complete and submit electronically via DukeHub the Intent to Graduate form within the time window appropriate for their graduation date.

- January 1 – January 31 for May graduation
- June 15 – July 15 for September graduation
- October 1 – October 31 for December graduation

Technical Standards for Degree Completion

To successfully complete the DNP programs, students must possess the technical abilities listed below:

- 1) Effectively speak, write, and read English.
- 2) Effectively use computer software outlined during admission process.

Graduate Recognition and Commencement

School of Nursing Hooding and Recognition Ceremonies

Each May and December, the School of Nursing hosts a Hooding and Recognition Ceremony for its graduates to recognize and celebrate their accomplishments. All graduates are expected to attend this ceremony. Doctor of Nursing Practice graduates will receive their academic hoods at the May or December ceremony. All faculty are also expected to attend and participate in the School of Nursing Hooding and Recognition Ceremonies.

School of Nursing graduates can find additional information about the School of Nursing Hooding and Recognition Ceremony on the [School of Nursing graduation website](#).

[Duke University Commencement Exercises](#)

Duke University conducts one commencement ceremony annually. The Duke University Commencement Exercises for all graduates are held at Wallace Wade Stadium on a Sunday in May. Information about the Duke University Commencement Exercises and a full list of graduation weekend events are posted each year at the [Duke University Commencement website](#).

The Duke University Commencement Exercises represent the only opportunity for degree candidates to march in an official University graduation ceremony. Particularly among students who are studying for professional or graduate degrees, the actual completion date of the required curriculum does not always correspond with the completion of the spring semester. The following criteria apply to graduating students:

- Graduates may participate in only one University graduation ceremony.
- Students who complete all program requirements by the conclusion of the spring semester (May graduates) are eligible to participate in the University Commencement Exercises.
- Students who have not completed all program requirements by the conclusion of the spring semester may participate in the University Commencement Exercises only if they complete all program requirements by the conclusion of the summer semester. The names of these September graduates will be printed in the program of the Duke University School of Nursing May Hooding and Recognition Ceremony but will not be included in the program of the main Duke University Commencement Exercises. (The names of September graduates will be printed in the program of the Duke University Commencement Exercises for the following May.)
- Students whose degree requirements will be completed following the summer semester will not be eligible to participate in the University Commencement Exercises until the following year.

[Diplomas](#)

Students who complete degree requirements at the end of the spring term receive degrees dated May (diplomas mailed in mid-May). Students who complete degree requirements at the end of the summer term receive degrees dated September (diplomas mailed in mid- to late September), and those who complete degree requirements at the end of the fall term receive degrees dated December (diplomas mailed in mid- to late January). Diplomas are mailed to all graduates.

NON-ACADEMIC POLICIES AND PROCEDURES

[Duke University – Tobacco Free Campus Policy](#)

Duke University is a tobacco free campus. Use of all tobacco products, including smokeless products and e-cigarettes, is prohibited on all property and grounds owned and leased by Duke University.

[Alcohol / Drug Policy](#)

Duke University's alcohol policy encourages students to make responsible decisions about the use of alcoholic beverages and promotes safe, legal, and healthy patterns of social interaction. Duke recognizes its students to be responsible adults and believes that students should behave in a manner that is not disruptive or endangering to themselves or others and is in compliance with state and local laws regarding the possession, consumption, sale, and delivery of alcohol.

Duke University prohibits members of its community to manufacture, sell, deliver, possess, use, or be under the influence of a controlled substance without legal authorization. A controlled substance includes any drug, substance or immediate precursor covered under the North Carolina Controlled Substances Act, including but not limited to opiates, barbiturates, amphetamines, marijuana, and hallucinogens. The possession of drug paraphernalia is also prohibited under North Carolina state law and university policy. Drug paraphernalia includes all equipment, products and material of any kind that are used to facilitate, or intended or designed to facilitate, violations of the North Carolina Controlled Substances Act.

In addition to current matriculation processes, i.e., criminal background checks, satisfactory completion of all academic requirements as documented by final official transcripts, Duke University School of Nursing requires drug testing of all entering nursing school students at the time of matriculation.

Consistent with existing state and federal laws and University and Health System or other training site policies and procedures, diversion of controlled substances, record falsification, theft of controlled substances, and drug substitution are prohibited and shall result in corrective action up to and including academic dismissal. Cases of confirmed diversion will be reported to appropriate agencies, including but not limited to state boards of nursing and the Drug Enforcement Agency (DEA).

Reasonable Accommodation Process

Students who wish to be considered for reasonable accommodations at Duke University must self-identify to the [Duke Access and Accommodation Service/Student Disability Access Office](#).

Students currently enrolled at Duke University who want information about receiving consideration for reasonable accommodations should contact [Duke Access and Accommodation Services/Student Disability Access Office](#) at (919) 668-1267 for information.

Duke University Office for Institutional Equity

Under the auspices of the President, the [Office for Institutional Equity](#) provides institutional leadership in enhancing respectful, diverse and inclusive work and learning environments for the Duke Community. The office provides a range of services that uphold values of equity and diversity, as well as support compliance efforts in the areas of equal opportunity, affirmative action and harassment prevention.

Duke University Non-Discrimination Statement

Duke is committed to encouraging and sustaining a learning and work community that is free from prohibited discrimination and harassment. Duke does not discriminate on the basis of age, color, disability, gender, gender identity, gender expression, genetic information, national origin, race, religion, sex (including pregnancy and pregnancy-related conditions), sexual orientation, or military status, in the administration of its educational policies, admission policies, financial aid, employment, or any other institution program or activity.

Duke has designated the Vice President for Institutional Equity and Chief Diversity Officer as the individual responsible for the coordination and administration of its nondiscrimination and harassment policies. More information is available on the [OIE website](#).

Communication between Duke University and Students

Electronic mail (e-mail) is the official medium by which Duke University communicates policies, procedures, and items related to course work or degree requirements to students enrolled at the university. All matriculated students of the School of Nursing are assigned a Duke University e-mail account upon acceptance of an offer of admission. **It is the student's responsibility to check this e-mail account regularly and to respond promptly to requests made by e-mail. No other e-mail account may be used for official communication with the school.**

Use of Social Media

Overview

The Duke University School of Nursing (DUSON) recognizes and supports the professional use of social media by faculty, staff and students. In using social media, members of the DUSON community have an obligation to conduct themselves in accordance with all clinical institutional social media policies, Duke University Community Standard and the DUSON Academic Integrity and Professionalism Policy.

Social Media Defined:

Social media refers to any online networks, which connect and engage people, and where user generated content is publicly shared. Examples of social media include technology tools, online sharing sites and networks (e.g., Facebook, Twitter, LinkedIn, Pinterest), photo and video sharing sites (e.g. Instagram, Facebook Watch, Snapchat, TikTok, YouTube, blogs, listservs), audio platforms (e.g. Clubhouse, Anchor, Spotify), message boards or discussion forums (e.g. Reddit, Quora, Allnurses.com), closed/private community platforms (e.g. Slack, Facebook Groups, Microsoft Teams) and similar online sharing sites that feature user-generated content, which may arise in the future.

While new technologies create new opportunities for communication and collaboration, they also create vulnerabilities for individuals and institutions, especially those involved in the health care environment. The purpose of this policy is to promote the safety and privacy of faculty, staff, students, patients and their families, and visitors through the protection of sensitive and confidential information. DUSON recognizes and supports professional use of social media and recognizes that the workforce participates in social media for personal use. This policy covers the use of social media and internet activities that associate the DUSON community with all institutions who support DUSON through clinical placements. Since social media often spans traditional boundaries between professional and personal relationships, additional vigilance is required to ensure that one is protecting personal, professional, and university reputations.

All faculty, staff and students within the DUSON community are expected to observe professional standards for communication in all interactions and exercise wisdom and caution in using social media. Once posted online, the content leaves the contributing individual's control forever and may be traced back to the individual in perpetuity. Bear in mind that people have been denied employment because of information posted on social networking sites.

The following guidelines apply to the DUSON community who identify themselves as part of DUSON on professional and personal social media sites:

- Protect confidential and sensitive information. Do not post confidential information about the university, staff, students, clinical facilities, patients or others with whom one has contact in the role as affiliated with DUSON.
- Students and faculty/clinical instructors in clinical settings should familiarize themselves with the social media policies of those agencies.
- Faculty, staff or students will not initiate or accept friend requests (or the like) from patients or patient families except in unusual circumstances when there is an established relationship prior to the date of treatment.
- Faculty, staff and students will not participate in online conversations with patients, patients' families, and others regarding patient information.
- Activities that occur during clinical experiences will not be shared through social media. Sharing information includes, but is not limited to posting pictures of patients, families, patient records, healthcare workers, interiors of clinical sites, faculty, fellow students, etc.

- Adhere to copyright laws and intellectual property rights of others and of the university.
- DUSON or Duke logos or graphics/images are not to be used on personal social media sites or to promote/endorse a product, cause, political party or candidate.
- Personal phone conversations, texting, or use of social media is not allowed at any time while in patient/client areas. Personal phone conversations, or use of social media is not allowed at any time while in the classroom.
- Recording or videotaping of professors, students, staff, or educational activities for personal or social media use is prohibited unless the individual(s) involved grant permission for such taping.

The social media policy also applies to anyone engaged in human subject research with patients or families and to all visiting scholars.

Consequences:

DUSON will investigate and adjudicate potential violations of this policy. Consequences for failure to abide by any component of this policy may result in disciplinary action, including but not limited to formal reprimand, suspension, course and/or clinical failure, dismissal from the program based on the type and seriousness of the violation.

Employees are subject to these consequences including termination.

DUSON may have mandatory reporting obligations to licensing and credentialing bodies. Breaches of the social media policy may be submitted to the North Carolina Board of Nursing, which may affect licensure or eligibility for licensure.

Students should also be aware of the social media policies of non-Duke facilities and adhere to these. Breach of these policies may result in additional penalties from the facility.

Creating Social Media Pages and Sites:

The purpose of a DUSON-branded social media presence enhances and strengthens the Duke Brand Identity, and individuals, groups or departments and centers should not create Duke-branded social media sites. Under certain circumstances, the School will permit the creation of social media sites associated under the DUSON brand.

Permission to create these sites must be granted by the Assistant Dean for Strategic Communications or a designee.

If permission for a DUSON-branded site is granted, members of the School's Communications Department must be included among the site's administrators. All Duke University, Duke Health and Duke University School of Nursing brand, communication and social media standards must be maintained.

DUSON Student Flu Policy

Purpose:

Duke Health - which includes Duke University Health System (DUHS) and the Schools of Nursing and Medicine—is committed to reducing the prevalence of the influenza virus within our community. Students enrolled in all programs at the Duke University School of Nursing must abide by the [Healthcare Worker Flu Vaccination Policy and Procedure](#). Per the policy, healthcare workers includes health profession learners and associated faculty/instructors. Receiving an annual flu vaccine is mandatory and is a condition of enrollment for all Duke University School of Nursing (DUSON) students.

A student's failure to comply with requirements of the School of Nursing may result in administrative withdrawal from the School of Nursing. Annual influenza vaccination or documentation and approval of medical or religious exemption is required of all students.

Policy:

All currently enrolled DUSON students (on campus, online/distance based) are required to comply with the [Healthcare Worker Flu Vaccination Policy and Procedure](#) and must provide documentation of the vaccine by the established DUSON deadline. Students who begin their program in the spring semester must submit initial documentation in accordance with the established pre-enrollment compliance deadline.

Procedure:

In September of each year, the Vice Dean for Academic and Student Affairs will contact all currently enrolled DUSON students (on campus, online/distance based) via their Duke email account directing them to comply with the mandatory flu vaccination requirement.

Duke Student Health offers free flu vaccines to currently enrolled students who pay the Duke Student Health Fee. New and current students can also get a flu vaccine from their healthcare provider, or any immunization provider. If students receive the vaccine from a provider outside of the Duke network or from some Duke-affiliated practices, they will need to send documentation of the shot to SON_StudentCompliance@dm.duke.edu or fax to 919-681-0715. Students enrolled in the ABSN and Nurse Anesthesia Programs should submit documentation via the [CastleBranch](#) system.

Exemption to influenza vaccination may be granted for documented medical contraindications as established by the CDC or documented religious beliefs. Note that egg allergy will no longer be approved for medical exemption, due to the availability of egg-free vaccine. Exemptions must be applied no later than the established deadline for the current flu season. Medical and Religious exemptions must be applied for annually.

Students who have a medical or religious reason to request an exemption may do so by completing the [religious exemption](#) or [medical exemption](#) request form and submitting it to the Office of Student Services for the Assistant Dean of each program to review. The School of Nursing has final approval of all exemptions. Students required to attend a clinical may be required to submit additional documentation to that clinical site and exemption approval may be determined by that site. Medical or religious exemptions may preclude students from completing their clinical experiences at certain sites.

Requests for exemption should be send to SON_StudentCompliance@dm.duke.edu or by fax to 919-681-0715. All requests for exemptions will be reviewed and all decisions will be communicated directly to the requestor.

RESOURCES (DUKE UNIVERSITY)

(see also the [Duke University Student Affairs website](#))

Duke Student Health Services

Duke Student Health provides a variety of student healthcare services (including general medical care, allergy and travel clinics, some laboratory services, basic nutrition counseling, and physical therapy) at the Duke Student Health Center. Medical Services are provided by board-certified faculty physicians, physician assistants, nurse practitioners, and resident physicians under faculty supervision.

The Duke Student Health Center is located in the Student Wellness Center, 305 Towerview Drive. Hours of operation are listed [online](#). The Duke Student Health Center is not a "walk-in clinic"; students are seen by appointment. Appointments may be scheduled via phone at 919-681-9355 or online through the [Duke MyChart patient portal](#).

Many but not all services provided by the Duke Student Health Center are covered by the Student Health Fee. Information about covered and non-covered services is available online; this information may be subject to change over time. Students who are not sure whether a service is covered should ask the staff at the Duke Student Health Center before receiving the service.

Student Mental Health Services

The Duke University School of Nursing is committed to assisting in the care and well-being of our students at all points of their educational careers. As part of the University community, the School of Nursing works closely with Duke [Counseling and Psychological Services](#) (CAPS) to ensure that assistance can be provided to any student with personal or emotional concerns. CAPS provides a confidential, coordinated, and comprehensive range of counseling and psychological services to meet the unique needs of individual students.

Services include confidential assessment and brief counseling/psychotherapy regarding personal concerns about family, social, academic, and sexual matters. The professional staff is composed of psychologists, clinical social workers, and psychiatrists. Individual, couples, and group counseling may be utilized in helping students resolve their concerns once the student and staff member have identified together the most helpful alternative. CAPS services are available to all undergraduate, graduate, professional, and allied health students who pay the Student Health fee. There are no additional costs for these services. Students can make an appointment by calling (919) 660-1000.

Blue Devils Care

Building upon remote offerings from CAPS and Student Health, Blue Devils Care provides mental telehealth support to all students at no cost. Round the clock services are designed to assist students with issues that can be safely addressed remotely. Other offerings include scheduled counseling appointments and digital self-care designed to support and promote students well-being.

DukeReach

DukeReach helps individuals to identify support services from among the variety of resources across campus for on campus students or in one's local community for distance-based students. It is also a place to report non-crisis concerns about a student's health or behavior. Contact DukeReach at 919-681-2455 or by emailing dukereach@duke.edu.

Safety

Duke University has a continuing commitment to provide a safe environment for all members of the University community. The University's lighting system, including special blue lights to identify emergency telephones, police patrols, the Security Alert Network on the campus and medical center, van services, and automatic door locking devices are some of the measures taken to ensure safety. Duke University alone cannot guarantee the personal safety of each person who works or studies on campus. Safety is a community issue that can be addressed only through the active participation of every member of the Duke community. Each person must help achieve this objective by taking all appropriate precautions. Safety-related information and services are listed below.

Duke University Police

The [Duke University Police Department](#) (located at 502 Oregon St.) provides 24-hour law enforcement and security services to Duke's academic campus and health system, as well as off-campus areas.

If a crime is in progress or if you have an emergency to report, dial 911. For non-emergencies, call (919) 684-2444.

Get Assistance

Get Assistance provides resources so that students can feel safe and welcome at Duke as well as information on how to report an incident; gain help in an emergency or crisis situation; and access health and wellness and other services.

Duke University Student Affairs

The Duke University [Division of Student Affairs](#) includes a number of departments which support and enrich the educational experience of students at Duke University:

The [Center for Sexual and Gender Diversity](#) provides education, advocacy, support, and space for lesbian, gay, bisexual, pansexual, transgender, transsexual, intersex, questioning, queer, and allied students, staff, and faculty at Duke. The Center for Sexual and Gender Diversity also serves and supports Duke alumni/ae and the greater LGBTQ community.

The [Center for Multicultural Affairs](#) empowers students and their organizations to create a vibrant and inclusive multicultural student community. CMA promotes community engagement, multicultural education, and leadership development through its programs and services.

The [International Student Center](#) provides educational services and advocacy to the international population at Duke as well as outreach to the Durham community. The Center offers extensive cross-cultural programming and information to enhance the global mission of the university.

[Jewish Life at Duke](#) is comprised of the Freeman Center for Jewish Life and the Rubenstein-Silvers Hillel. The Freeman Center provides a home for Jewish life on campus while the Rubenstein-Silvers Hillel provides exciting and innovative programming throughout the Duke community. The combination works to foster and enrich Jewish life through social, educational, religious, and cultural activities.

[Center for Muslim Life](#) is committed to enriching the lives of Muslim students and the whole campus through events and activities that cater to the spiritual, social, and intellectual needs of Duke students.

The [Mary Lou Williams Center for Black Culture](#) strives to promote racial understanding, build community, and foster an appreciation for and increase knowledge of black people, black history, black culture, and the vast contributions of people of the African Diaspora.

The Duke University [Women's Center](#) works to improve the status of women in higher education at Duke. By educating the university community about gender-related issues, addressing matters of particular concern to women, and promoting a campus climate that is safe, healthy, and respectful of all people, the Women's Center enhances all students' academic experiences. In collaboration with student groups and faculty and staff colleagues, the Women's Center offers information, advocacy, technical assistance, referrals, and programming on a variety of gender-related issues, including safety, health, personal and professional development, sexuality, discrimination, harassment, and sexual assault support services.

Graduates and Professional Student Council (GPSC)

The [Graduate and Professional Student Council](#) is the umbrella student government organization for Duke's nine graduate and professional schools. GPSC represents and advocates on behalf of graduate and professional students; serves as a liaison between graduate and professional students and the University Administration; serves as a liaison among the student governments of the graduate and professional schools; nominates graduate and professional student representatives to University committees; programs events of interest to the graduate and professional student community; and provides financial support for programming of graduate and professional student groups. GPSC functions are accomplished mainly through the General Assembly, in which representation is allotted to each degree-granting program according to the number of enrolled students. Representatives of each program and officers of the council are selected annually. School of Nursing students participate actively in this organization.

Students interested in representing the School of Nursing should inquire through the DUSON Student Government (Student Council) regarding election to GPSC.

The Libraries

The Duke University Library system, with more than seven million volumes, ranks among the top ten private research libraries in the United States. Its collections also include extensive holdings of serials, electronic resources, digital collections, and media, and more than fifteen million manuscripts. The system includes the Perkins/Bostock main library and the David M. Rubenstein Rare Book and Manuscript Library/University Archives on West Campus; Lilly Library (fine arts, philosophy, film and video, performing arts) and the Music Library on East Campus; and the Pearse Memorial Library at the Duke Marine Laboratory in Beaufort, North Carolina. The Duke University Library system also includes four independently administered libraries: the Divinity School Library, the Ford Library at The Fuqua School of Business, the Goodson Law School Library, and the Duke University Medical Center Library. For more information about the resources and hours of operation of each of the libraries, visit the [Duke University Libraries website](#).

The Duke University Medical Center Library (DUMCL)

Located adjacent to Duke Hospital in the Seeley G. Mudd Building, DUMCL supports patient care, teaching, and research activities of the Duke University Medical Center by providing its users with consistent and efficient access to timely, relevant biomedical information. The DUMCL collection has approximately 183,500 volumes. Users have access to more than 4,300 biomedical electronic journal subscriptions, including more than 375 full-text online nursing journals.

DUMCL maintains a robust online presence, thereby extending access to library resources and services beyond its physical location. The library also offers reference and educational services (consultations and training in database searching and information management), as well as a wide variety of tutorials and Internet subject guides on its website. [The Duke University Medical Center Library website](#) provides access to licensed and locally created databases, electronic books and journals, and online learning and reference tools. Databases include PubMed, Ovid MEDLINE, CINAHL Plus with Full Text, Cochrane Library and the Cochrane Database of Systematic Reviews, EMBASE, PsycINFO, Web of Science, Nursing Consult, and many others. The library website also includes hundreds of free Internet resources organized into subject guides that are searchable by keyword. Electronic resource guides such as Nursing Tools provide quick and easy access to important tools and evidence-based practice information as well as other library services. Interlibrary loan services fill requests for materials not available in the Duke Libraries or online, and books and journal articles can be requested from libraries across the state and the country. A desktop delivery service provides digital copies of materials directly to the requester's workstation.

Medical Center Librarians provide in-depth consultations to faculty, staff, and students. These consultations can include individualized training in resources, identification of the best resources to meet the user's need, development of effective search strategies, assistance with bibliographic software, and advice on other information management skills and resources. The Library staff also provides educational sessions customized to the needs of School of Nursing users.

Checking Out Books: You need a Duke ID card/badge or [DukeCard](#) with a valid bar code in order to check out books. Books in the Medical Center Library circulating collection may be borrowed for a four-week period and renewed twice, unless someone else has placed a hold on the item. Materials may be renewed online, by phone, or in person at the Library. Refer to the Duke University Libraries website for additional information about borrowing privileges and other services.

DUSON GENERAL INFORMATION

(Students should consult the School of Nursing website for the most up to date information regarding services, resources, and policies. Below are a few of the noteworthy items for students to keep in mind throughout the academic year).

Student Identification Badges / Cards

Students enrolling for the first time are issued identification badges (Duke Card) that they should wear at all times. The card is a means of identification in clinical sites as well as for library privileges, athletic events, and other University functions or services open to graduate students. The first card is issued free; replacement cards cost \$10 each. The Medical Center Duke Card Office is located at 04230 Duke Clinics Building (adjacent to the Medical Center Bookstore). For more information, call the Medical Center Duke Card Office at (919) 684-2273 Monday-Friday between 7:30 am-5:00 pm or consult the [Duke Card](#) website.

ID badges must not be transferred or loaned to non-Duke students. Lost or stolen badges should be reported immediately to the Office of Admissions and Student Services. A replacement fee of \$10.00 will be assessed if a badge is lost or stolen.

Parking

Students who are not Duke employees must use designated parking at the fee determined by the University. Students register for parking permits (and renew permits annually) online through the [Permits](#) web page of the Duke University Parking and Transportation Services web site. Additional information is available through the [Parking and Transportation Services](#) web site or by calling the Parking and Transportation Services Office at (919) 684-7275. Office hours are Monday–Friday 7:30 a.m.–3 p.m.

ePrint

Duke's ePrint print management system allows DUSON students to print directly from their own computers to print stations in the Pearson Building and elsewhere on campus. In order to use this system, students must download ePrint software (free from OIT) and install it on their computers. (For details, consult the [OIT ePrint](#) webpage.) Students receive a printing allocation each semester which supports black-and-white laser printing through the ePrint quota system.

Name and Address Changes

To make name and other biographical information changes, follow the instructions from the [Office of the Duke University Registrar](#). It is the student's responsibility to assure that home and mailing addresses as well as phone numbers are updated as changes occur. This can be done in DukeHub. After graduation, submit name and address changes to the Graduate School and also to the Duke Alumni Association.

Technology Support

Computer and other technology support is provided for the School of Nursing by SON-IT. A full description of the services available and how to access them is provided on the [SON-IT webpage](#).

DUSON RESOURCES TO SUPPORT STUDENTS

The School of Nursing has a wide array of [resources to support students](#) in the academic careers. These services are presented in great detail on the DUSON website. Students should familiarize themselves with the website information and consult it often for updates and changes. These include but are not limited to:

- Student Success Center
- Stress First Aid
- Student Technology Resources

DUSON STUDENT ORGANIZATIONS

The School of Nursing has a plethora of student organizations that offer activities to support and interest students. A comprehensive listing of these organizations as well as information about joining or starting a student organization is available on the [DUSON website](#).

Appendix A

Duke University School of Nursing

Student Complaint and Dispute Resolution Process For Academic Issues

Purpose

The purpose of this document is to describe the process by which student concerns related to academic issues may be brought to resolution. This procedure does not apply to a dispute about a grade earned unless it is alleged that the determination of the grade resulted due to a failure to follow published policies or procedures. Additionally, if the complaint is regarding the quality of a course or instruction in a course, it should be addressed through the course and instructor evaluation process. Issues of harassment or discrimination, or if a student believes that they have been retaliated against as a result of utilizing this process, fall under the auspices of the Duke University [Office for Institutional Equity](#). The [Duke Student Ombudsperson](#) is also available to help students confidently advocate for themselves as an informal and impartial resource.

Resolution Process²

The student and faculty are encouraged to collaborate to reach a solution. In the event it cannot be resolved, the student may initiate the process outlined below.

1. A written request for a meeting with the faculty member must be made within three (3) business days of the occurrence of the issue. The meeting request should be specific as to the issue and the resolution being sought. Upon receiving the request, the faculty member or faculty designee will schedule the meeting with the student within five (5) business days. The faculty member will document the decision, agreed upon action plan, outcome, or resolution to the student in an email within three (3) business days. After review of the documentation, the student can request consideration of the matter by the appropriate program administrator (Academic Program Assistant Dean (AD) or CRNA Program Director).
2. A written request for a meeting with the appropriate program administrator (Academic Program Assistant Dean (AD) or CRNA Program Director) must be made within three (3) business days. Upon receiving the request, the AD/CRNA Program Director will schedule a meeting with the student and faculty member within five (5) business days. Students may also request to include an academic advisor be present at the meeting. The agreed upon action plan, outcome, or resolution will be documented to the student in an email within three (3) business days. After review of the documentation, the student can request consideration of the matter by the Vice Dean for Academic Affairs (VDAA).
3. A written request for a meeting with the VDAA must be made using the Request for Formal Resolution of Student Complaint Related to Academic Issues form (located in this policy) within three (3) business days. Upon receiving the request, the VDAA will schedule a meeting with the student, the faculty member, and appropriate program administrator (Academic Program Assistant Dean (AD) or CRNA Program Director) within five (5) business days. Students may also

²Audio/video recording of meetings at any point in the process is prohibited.

request to include an academic advisor be present at the meeting. After meeting, the VDAA will make a written summary as to the resolution of the issue within three (3) business days. This summary will be signed by the VDAA and the student and be shared with all involved parties including the Dean. This document will be retained in the student's file (created or maintained per programmatic recommendations) and DUSON's formal complaint file for accreditation purposes.

4. The student can appeal the VDAA's decision to the Dean. The appeal must be in writing and received by the Dean within three (3) business days of the VDAA's decision being sent to the student. The Dean may review the VDAA's decision only in cases where (i) there is new information not reasonably available at the meeting that could have materially affected the outcome; or (ii) a perceived breach of the resolution process that materially affected the outcome. The student's appeal request must identify the ground(s) for appeal. Appeals are based solely on the written record (including any written submission or response provided by the student), unless determined otherwise by the Dean. When an appeal is received, the VDAA will provide the Dean with the full record. After consideration of the appeal, the Dean will issue a written decision and provide copies of the decision to the student, the VDAA, and other appropriate parties. The decision of the Dean is final.
5. Once the procedural process is deemed final, the documented action plan, outcome, or resolution is implemented through the appropriate offices at DUSON. All decisions are shared with relevant individuals as appropriate and remain in effect through the designated time period.

Appendix B

Academic Integrity and Professionalism Policy For Duke University School of Nursing Community

Purpose

The overall objective of the Academic Integrity and Professionalism Policy (AIPP) is to promote an environment of intellectual honesty, professionalism, trust, and integrity in the Duke University School of Nursing (DUSON). Furthermore, this policy is intended to guide the academic and professional behavior of DUSON students as it applies to all endeavors and conduct pertaining to nursing education, research, and practice. All DUSON students are representatives of both the School and of the nursing profession and are expected throughout their education to engage in appropriate interpersonal conduct, act ethically, take responsibility for their actions, and be mindful of their impact on others in the community. DUSON supports the ethical and professional development of students to enable them to grow in their ability to act with academic and professional integrity. It is a core academic requirement that each DUSON student affirms their commitment to adhere to the Duke University Community Standard, DUSON Mission and Values, and the AIPP.

Issues of harassment or discrimination fall under the auspices of the Duke University [Office for Institutional Equity](#). This policy does not replace any reporting requirements or actions related to other licensing, regulatory, or legal issues.

*The Duke Community Standard**

All members of the Duke University community are expected to uphold the Duke Community Standard, which is:

Duke University is a community dedicated to scholarship, leadership, and service and to the principles of honesty, fairness, respect, and accountability. Citizens of this community commit to reflect upon and uphold these principles in all academic and nonacademic endeavors, and to protect and promote a culture of integrity.

To uphold the Duke Community Standard:

- I will not lie, cheat, or steal in my academic endeavors;
- I will conduct myself honorably in all my endeavors; and
- I will act if the Standard is compromised.

* Adapted from [The Duke Community Standard in Practice: A Guide for Undergraduates](#)

Policy

Academic Integrity and Professionalism Policy (AIPP) for Duke University School of Nursing Community

Integrity at DUSON comprises six fundamental values: honesty, trust, fairness, respect, responsibility, and courage. More details regarding these values can be found on the [International Center for Academic Integrity \(ICAI\) website](#). All members of the DUSON community are required to adhere to these **six fundamental values** and to demonstrate behavior consistent with these values including, but not limited to, the examples provided below.

A. Honesty

The following are examples of meeting the value of honesty:

- Using correct procedures for citation and documentation of references.

- Submitting only one's own work for course credit.
- Completing all graded academic work independently unless the faculty member or other responsible party has expressly authorized collaboration with others.
- Avoiding using a significant portion of any paper or project to fulfill the requirements of more than one course, unless receiving prior faculty permission to do so.
- Honestly representing one's own academic, clinical, and work credentials.
- Accurately documenting academic, research, clinical, or patient information.
- Consulting only authorized materials, equipment, or devices when taking tests, quizzes, examinations, or other evaluative procedures.
- Being truthful in applications for admission to academic programs, when seeking employment, and financial support for education or research.

B. Trust

The following are examples of meeting the value of trust:

- Using only one's own access codes, passwords, login codes, keys, and facility access cards.
- Refraining from engaging in romantic, sexual, or other nonprofessional relationships with patients and/or patient's family/care supporters.
- Practicing behaviors in the clinical setting that optimize the quality of patient care.
- Always identifying oneself as a student in clinical situations and avoiding misrepresentation of licensure and certification status.
- Protecting the confidentiality of all personal health information, whether it is transmitted electronically (including email, text messages, photos, audio, video, or any other electronic format), on paper, or through verbal communication.
- Refraining from accessing academic or administrative files, research documents, or patient medical records without authorization.

C. Fairness

The following are examples of meeting the value of fairness:

- Giving full credit and acknowledgement to all collaborators on projects and reports.
- Observing the time constraints imposed on tests, quizzes, examinations, and assignments³, and take them when scheduled unless appropriately excused.
- Contributing equitably to group assignments¹.

D. Respect

The following are examples of meeting the value of respect:

- Treating all persons with respect in accordance with Duke University policies and requirements.
- Demonstrating respect for the cultural backgrounds of all people.
- Treating all members of the DUSON community, patients, research participants,

³ The term "assignment" is any work, required or volunteered, submitted to a faculty member, clinical instructor, preceptor, or other responsible party for review and/or academic credit.

and family members with respect and dignity at all times, both in their presence and in discussions about them with fellow students and professional colleagues.

- Respecting the rights of patients and research participants and their families to be informed about and to participate in decision-making concerning their health care or participation in research.
- Communicating truthfully with patients, research participants, families, and professional colleagues in all clinical situations to avoid misrepresentation.
- Respecting the modesty and privacy of all patients and research participants.
- Maintaining a professional appearance consistent with clinical site and/or school requirements.
- Respecting the time of members of the DUSON community, patients, research participants, families, and professional colleagues by avoiding late arrivals and early departures.
- Maintaining civility and professional behavior at all times in the classroom, laboratory, clinic, hospital, and all others settings where health care is delivered.
- Respecting the intellectual property and educational and research materials of others by complying with principles of fair use and copyright law, and by avoiding unauthorized appropriation, reproduction, or dissemination of course materials in any medium (print, audio, visual, multi-media, and online).

E. Responsibility

The following are examples of meeting the value of responsibility:

- Following the specific directions of course faculty, clinical instructors, or other responsible parties with respect to academic integrity and academic honesty.
- Asking course/clinical instructors for clarification if there is any question concerning the degree of collaboration permissible on an assignment¹.
- Rigorously observing best practices in hygiene and safety in clinical practice.
- Recognizing when one's ability to function effectively and safely in a clinical or research environment is or could be impaired (by exhaustion, illness, or any other factor), and notifying a responsible person that assistance is needed.
- Avoiding engagement in patient care or professional interactions while impaired by any substance. (See DUSON policy entitled "Alcohol/Drug Policy" in the Student Handbook.)
- Recognizing the limitations of one's knowledge and skills in clinical situations, requesting supervision or advice as needed.
- Limiting all clinical activities to the proper scope of nursing student practice, consulting with course/clinical instructors if there are any questions on this issue.
- Acting in accordance with DUSON's Social Media Policy (located in the student handbook).

F. Courage

The following are examples of meeting the value of courage:

- Refusing to take examinations or to complete assignments¹ for any other student.
- Refusing to give unauthorized aid to other students or to receive unauthorized aid from other students on tests, quizzes, examinations, or assignments¹.
- Promptly reporting any suspected violations of academic integrity to the

- appropriate DUSON community member (as specified in Appendix C).
- Refraining from all other behaviors that clearly compromise intellectual integrity and honesty.

Appendix C

Duke University School of Nursing

Process for Dispute Resolution Related to the Duke Community Standard or School of Nursing Academic Integrity and Professionalism Policy

Purpose

All DUSON students must uphold the values of the Duke University Community Standard and DUSON's Academic Integrity and Professionalism Policy (AIPP). The process outlined below is to be utilized if a member of the DUSON community believes that there is a conflict between the above-mentioned standard and/or policy and demonstrated student behaviors.

Resolution Process⁴

1. **Reporting and Initial Determination:** When any member of the DUSON community suspects or observes a student failing to adhere to the standard or policy, that person should report the issue to the faculty of record (if the issue occurs in a course). If the issue occurs outside of a course, it will be reported to the appropriate program administrator (Academic Program Assistant Dean (AD) or CRNA Program Director). The faculty of record will then notify the appropriate program administrator (Academic Program Assistant Dean (AD) or CRNA Program Director) and may consult the Vice Dean of Academic Affairs (VDAA) as appropriate.
2. The faculty member or appropriate program administrator (Academic Program Assistant Dean (AD) or CRNA Program Director) will then initiate a meeting with the student(s) involved. After the meeting, all parties may provide any additional information or documentation related to resolution of the issue. Based on a review of all of the information collected, the faculty of record or appropriate program administrator (Academic Program Assistant Dean (AD) or CRNA Program Director) will determine whether a violation of the policies has occurred and the appropriate response in consultation with the VDAA or Vice Dean of Research (VDR) (when the violation is related to academic research). If the VDAA is the faculty of record, the Vice Dean of Research or designee will serve as the consultant.
3. **Response to a Confirmed Violation:** The response to a student in violation of the Duke Community Standard or DUSON AIPP should be commensurate with the violation. Responses will be determined in each individual case based on a consideration of all the information gathered. Education and/or mentoring should be considered as options for responding to the confirmed violation.

Request for Board Review⁵

1. If a student wishes to dispute the outcome of the above-mentioned process, they may request an Integrity Review Board be convened. This written request is submitted to the Chair of the Faculty Governance Association (FGA) within three business days of the student receiving a final written determination under the Resolution Process outlined above. The statement should include the details regarding the dispute, names of involved parties, the student's account of what occurred, why they believe this warrants further review, and any other individuals they would like included

⁴Audio/video recording of meetings at any point in the process is prohibited.

⁵Audio/video recording of meetings at any point in the process is prohibited.

who can provide information regarding the dispute. At the student's request, an advisor may also be included. The advisor may be a student, faculty member, administrator, or other employee from DUSON. The advisor's role at the meeting is limited to quietly conferring with the student; they have no active speaking role. The FGA Chairperson will attempt to schedule the meeting within five (5) business days, either in person or video-/tele-conference, from receiving the request.

2. The Integrity Review Board will consist of: the FGA Chairperson, one member of the FGA Executive Committee (FGA-EC) (elected from the FGA-EC and not involved with the related issue), one representative from DUSON's FGA Diversity, Equity and Inclusion Committee (FGA-DEI) (elected from the FGA-DEI and not involved with the related issue), and two students (as recommended by the Student Government) for a total of five members. In accordance with FGA operating procedures, the FGA Chair Elect will serve if the FGA Chairperson has a conflict of interest with the proceedings being considered. All faculty and student representatives will be drawn from the programs, to the extent feasible, other than that in which the student is enrolled. The student will be notified of the proposed Review Board membership when they receive the confirmed meeting date and time from the FGA Chairperson. If the student believes that a member of the Review Board has a conflict of interest, they must notify the Chairperson no later than three business days after receiving notice of the members of the Integrity Review Board. The Integrity Review Board will elect one of its faculty members as Chairperson. The vote to elect the chair will be majority rule. An administrative staff member will be appointed to take confidential minutes of the Integrity Review Board meeting and outcome. These minutes will be retained as per the University Record Retention Policy in the office of the VDAA.
3. The Integrity Review Board Chairperson will establish the procedures for the meeting and provide notice to the student of such procedures at least three (3) business days in advance of the meeting. Generally, the meeting will consist of: opening statements by the student and, as appropriate, other parties; an opportunity for members of the review board to ask questions of the student who asked for the review; hear perspectives of other parties deemed relevant by the Integrity Review Board; and closing remarks from the student or other parties. After the meeting, the Review Board will privately deliberate and vote by majority to uphold, amend, or overturn the decision that is the subject of the review.
4. Within five business days of the meeting, the Integrity Review Board Chairperson will deliver a written response to the student, faculty member (where applicable), the appropriate Vice Dean, and the Dean of the School of Nursing as to its decision. Until the decision of the Review Board is made, the student's status at DUSON shall not be changed and the student may attend classes. However, the VDAA may institute interim restrictions when the individual's behavior constitutes an immediate threat to the health, safety, or welfare of others or the property or orderly functioning of the University community or any member of it. Those interim restrictions may include, but are not limited to, withdrawal of privileges, removal from or relocation within the community, removal from classes, etc. In cases where patient safety is an issue, the student will be withdrawn from the clinical setting until the appeal is resolved.
5. If any of the deadlines in these procedures require modification, the FGA Chairperson and/or Integrity Review Board Chairperson will provide written notice of the change.

6. A confidential record of the integrity review board meeting, decision, and outcome shall be retained by the VDAA. The purpose of this record is to provide a record of the students who have a previous history of violations of the Duke Community Standard and/or DUSON AIPP and to help ensure equity across Integrity Review Board decisions.
7. The student may appeal the decision of the Integrity Review Board to the Dean. Appeals must be submitted no later than five (5) business days after the date the Integrity Review Board's decision is sent to the student. The grounds for appeal are limited to:
 - new information not reasonably available at the time of the meeting is discovered subsequent to the meeting that could have materially affected the outcome;
 - procedural error in the resolution process that materially affected the outcome of the meeting.

The student's appeal request must identify the ground(s) for appeal. Appeals are based solely on the written record (including any written submission or response provided by the student or Review Board), unless determined otherwise by the Dean. When an appeal is received, the Integrity Review Board will provide the Dean with the full record. The Dean may request a written response from the Integrity Review Board concerning the appeal. The Dean will issue a written decision and provide copies of the decision to the student, the Integrity Review Board, VDAA and other appropriate parties. If the Dean determines that the appeal grounds are substantiated, the Dean can remand the matter to the Integrity Review Board for further proceedings. If the Dean determines that the appeal grounds are unsubstantiated, the decision of the Integrity Review Board is final and the documented outcome will be referred to the appropriate offices at Duke to implement the determined sanctions and/or remedies.

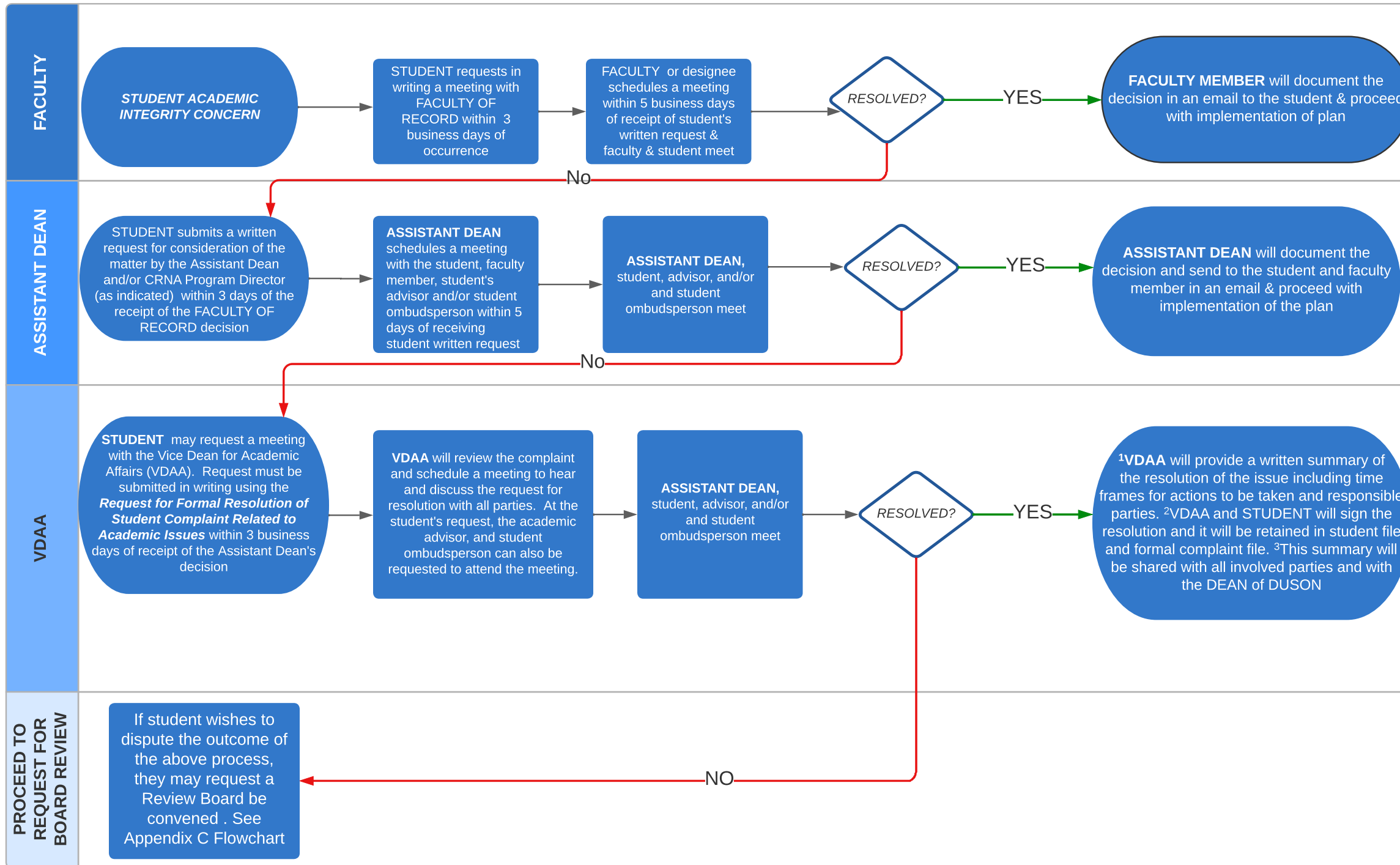
FGA Approved: June 26, 2023

Appendix A and C Flowcharts

The purpose of these documents is to provide a guide that visually depicts the process by which the policies in Appendix B and C can be implemented. These graphics are an **abbreviated**, visual illustration. Please refer to the appropriate appendices in their entirety when utilizing the process.

STUDENT COMPLAINT AND DISPUTE RESOLUTION PROCESS FOR ACADEMIC ISSUES

Appendix B Flowchart



PROCESS FOR DISPUTE RESOLUTION Duke Community Standard or DUSON Integrity Policy

Appendix C

