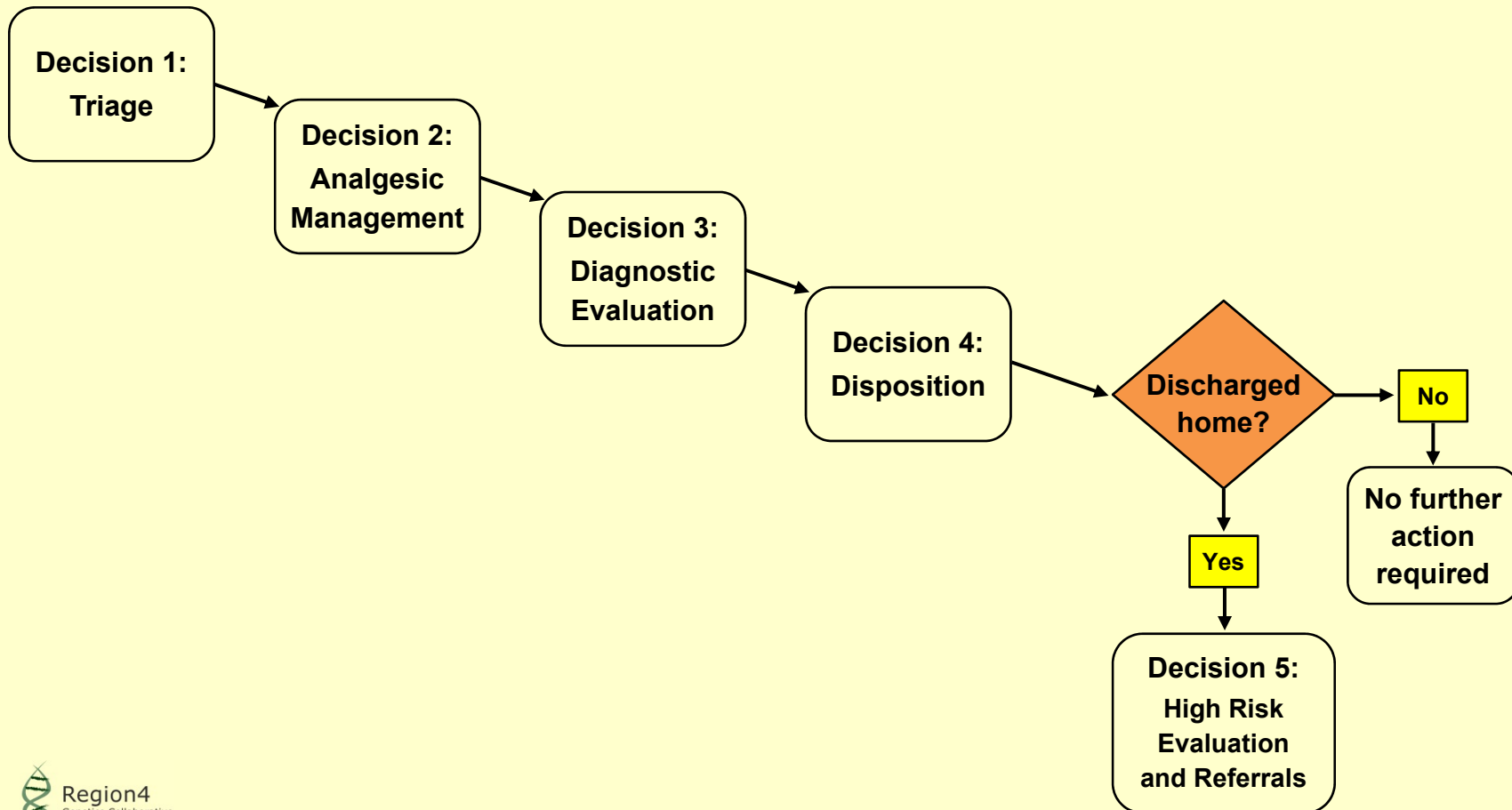
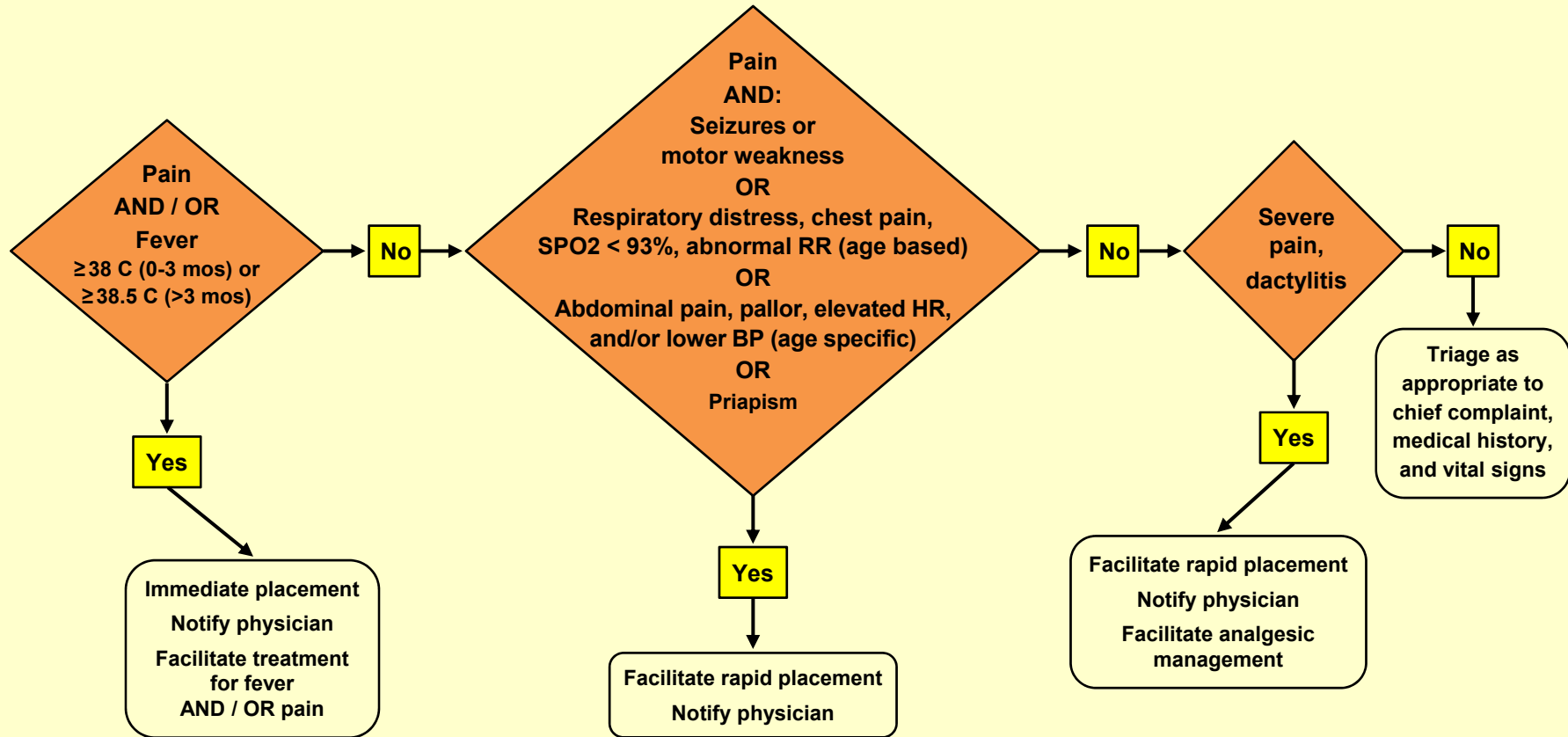


**Family Centered Pediatric Emergency Department  
Sickle Cell Assessment of Needs and Strengths (FC-Peds-ED-SCANS)  
Overall Algorithm**

(Copyright 2012, Duke University, Paula Tanabe)



**FC-Peds-ED-SCANS Decision 1**  
**Triage or Initial Nursing Assessment**  
**Nurse / Parent**  
 (Copyright 2012, Duke University, Paula Tanabe)



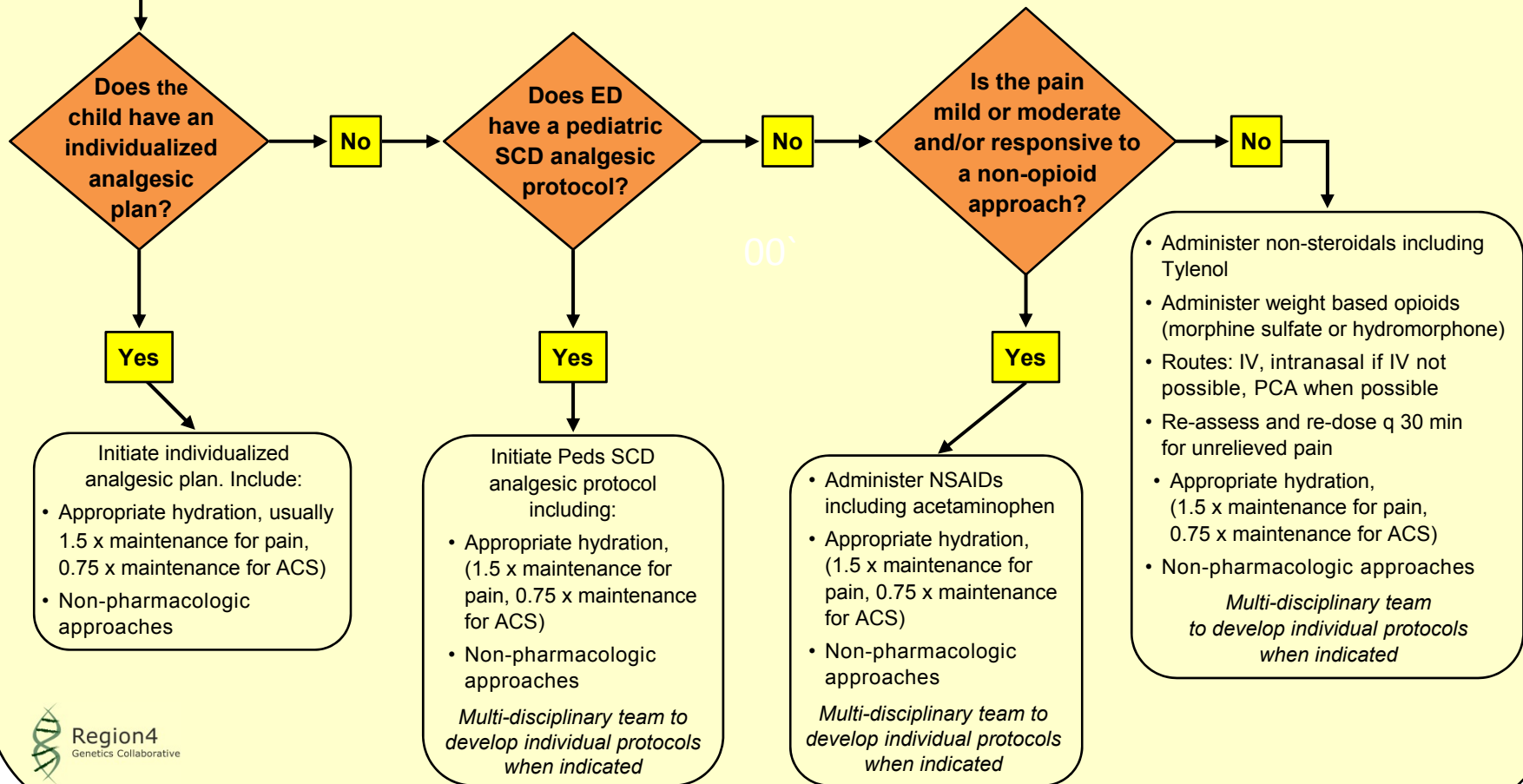
The FC-Peds-ED-SCANS was developed by Duke University Associate Professor Paula Tanabe, PhD in conjunction with the Region 4 Genetics Collaborative (Midwest) funded by the Health Resources and Services Administration (HRSA) Maternal and Child Health Bureau (MCHB) U22MC03963/H46MC24092. The Region 4 Genetic Collaborative is a project of the Michigan Public Health Institute.

## FC-Peds-ED-SCANS Decision 2 Analgesic Management Physician / Nurse / Parent

(Copyright 2012, Duke University, Paula Tanabe)

### Pain Assessment:

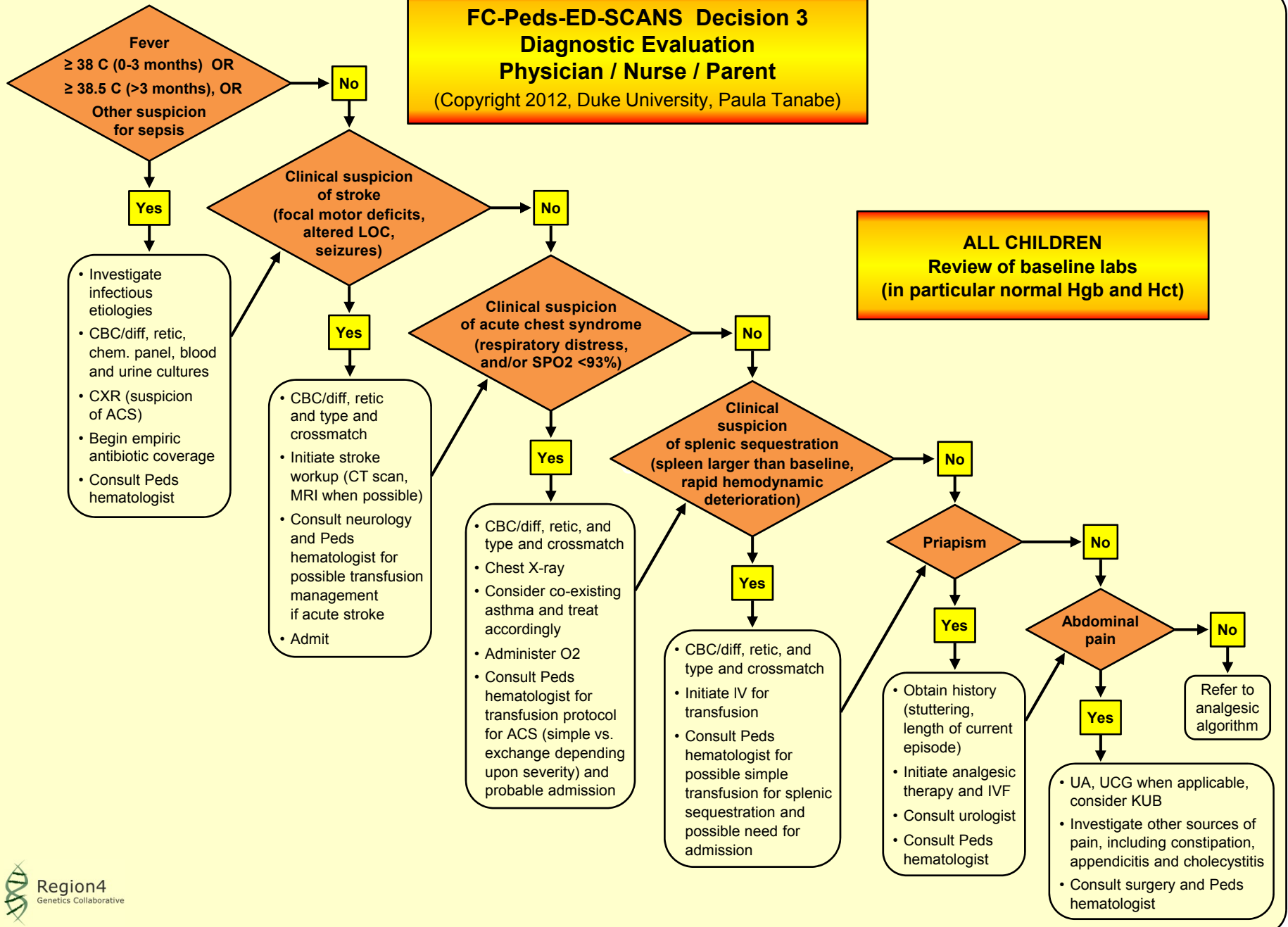
- Weight
- Age-appropriate pain scales (Ex: FLACC, FACES)
- Pain medicines at home (name, dose, route, time of last dose)



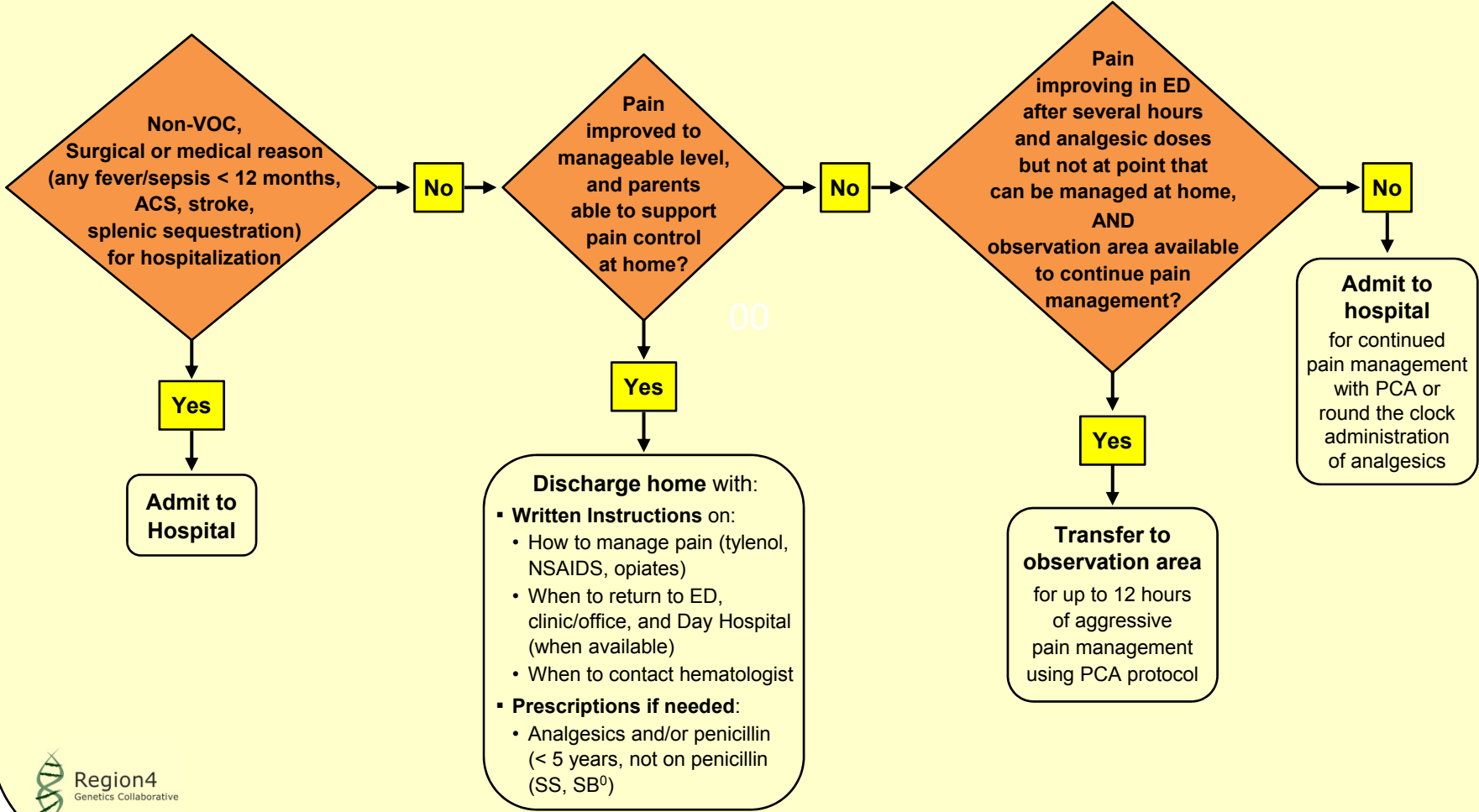
## FC-Peds-ED-SCANS Decision 3 Diagnostic Evaluation Physician / Nurse / Parent

(Copyright 2012, Duke University, Paula Tanabe)

**ALL CHILDREN**  
Review of baseline labs  
(in particular normal Hgb and Hct)



**FC-Peds-ED-SCANS Decision 4  
Disposition  
Physician / Nurse / Parent**  
(Copyright 2012, Duke University, Paula Tanabe)



The FC-Peds-ED-SCANS was developed by Duke University Associate Professor Paula Tanabe, PhD in conjunction with the Region 4 Genetics Collaborative (Midwest) funded by the Health Resources and Services Administration (HRSA) Maternal and Child Health Bureau (MCHB) U22MC03963/H46MC24092. The Region 4 Genetic Collaborative is a project of the Michigan Public Health Institute.

**FC-Peds-ED-SCANS Decision 5**  
**High Risk Evaluation and Referrals at ED Discharge**  
**Physician / Nurse / Parent**

(Copyright 2012, Duke University, Paula Tanabe)

